

Dim to warm dimming LED strip Datasheet



Product description :

- 24 V constant voltage strip (SELV)
- Waterproof Level IP20

Features and benefits :

- Small color tolerance, $R_a > 90$
- Color temperature 1800k-3000k
- 3-years guarantee

Typical Applications :

- Indoor Contour/Border Lighting
- Decorative lighting

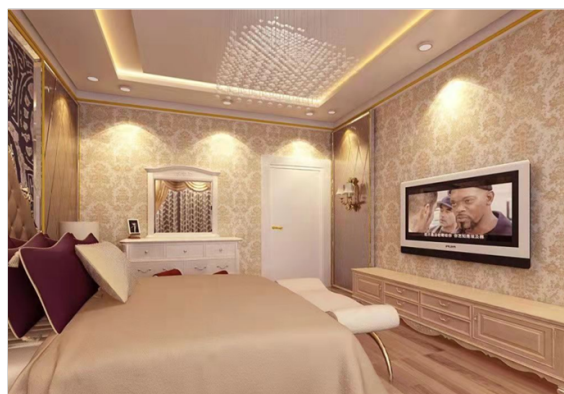




Table of Contents

General Information.....	3
Technical data.....	3
Product Dimensions.....	4
Electric-Optical Characteristics	5
Driver+LED strip+dimmer wiring diagram	6
Driver+LED strip+dimmer wiring diagram	6
Product Packaging Information	7
Precaution for Use.....	8
Environmental Compliance	8
Application Notes.....	8
Revision History	9
About Edison Opto	9



General Information

Ordering Code Format

<u>6</u>	<u>L B R 1</u>		<u>N 7</u>		<u>J</u>	<u>E 0</u>	<u>B</u>	<u>x x x</u>		<u>x x</u>	
X1	X2		X3		X4	X5	X6	X7		X8	
X1 Item		X2 Series		X3 Emitting Color			X4 Driver		X5 Length		
6	Module	LBR1	FPC	CW	Warm White + Cool White		J	CV 24V	E0	5M	
X6 Emitter		X7 Number of LEDs(M)			X8 Serial No.						
B	2216	112*2	224pcs	xx	--						

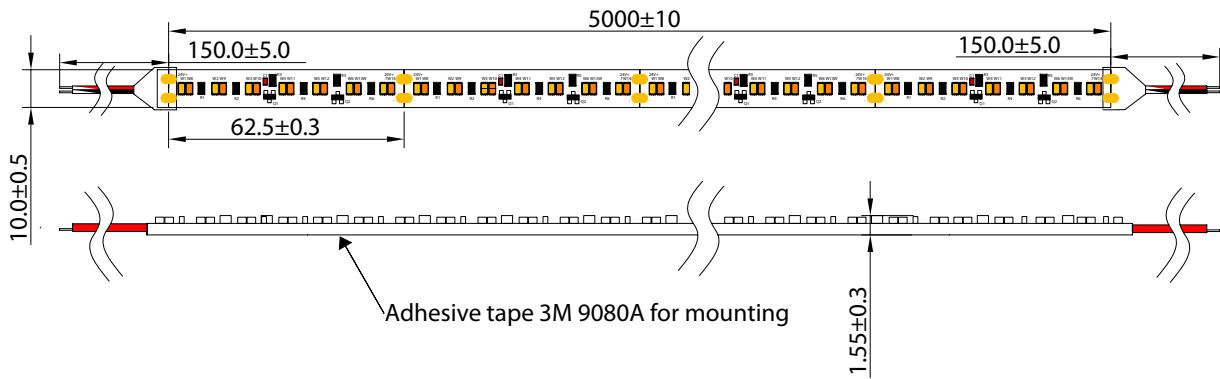
Technical data

Parameter	Value	Units
Beamcharacteristic	120	°C
Ambienttemperaturerange	-20~+45	°C
Tc	75	°C
DC supply voltage	24	V
Type of protection	IP20	
Color Temperature	1800-3000	K
Number of connection	5	M
Riskgroup(EN62778)	1	
Classification acc. to	IEC62031	
	IEC62778	
	IEC62717	
	IEC61000-4-2	



Product Dimensions

6LBR1N7JE0B11201 Dimensions (2216 224LED/M IP20 CV 24V Series)



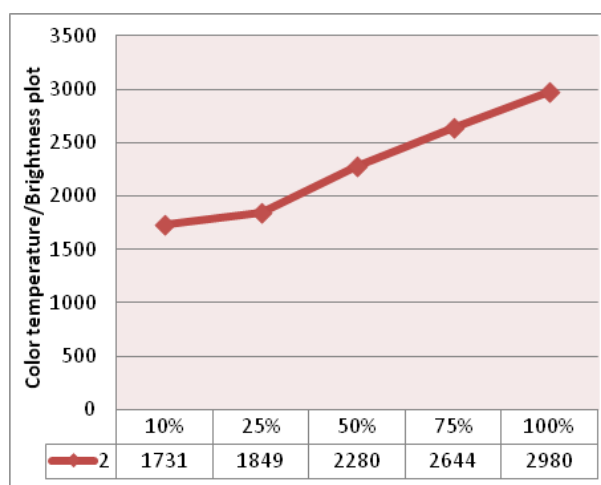
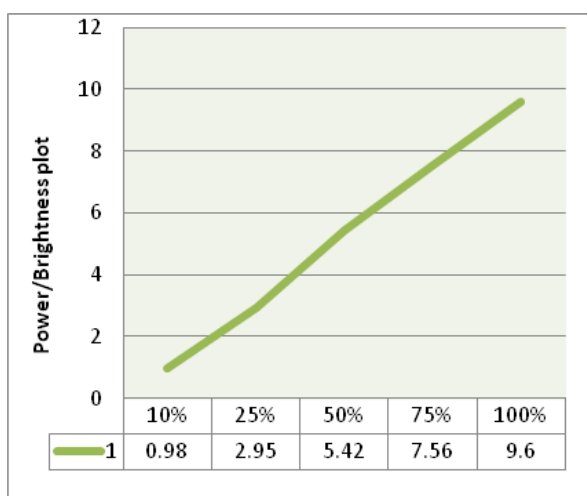
All dimensions are in millimeters.



Electric-Optical Characteristics

6LBR1N7JE0B11201 Dimensions (2216 224LED/M IP20 CV 24V Series)

Order code	CCT (K)	Voltage	Efficacy	Luminous flux	Power (W/M)	Ra	Unit cut (mm)
6LBR1UNJE0S14001	1800-3000	24	72lm/w	630lm/m	9.6(max)	90	62.5



From dark to bright, the color temperature changes from 1800-->3000K

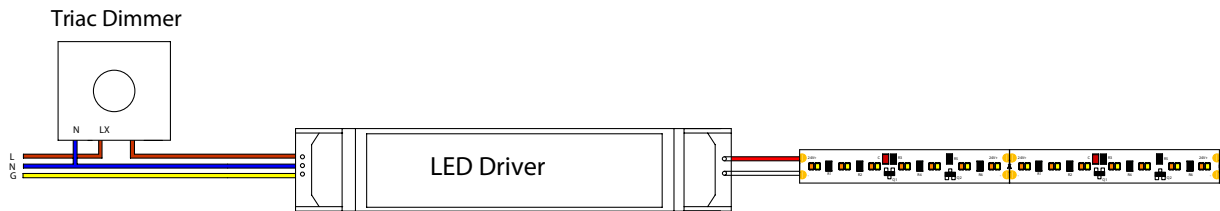


Note:

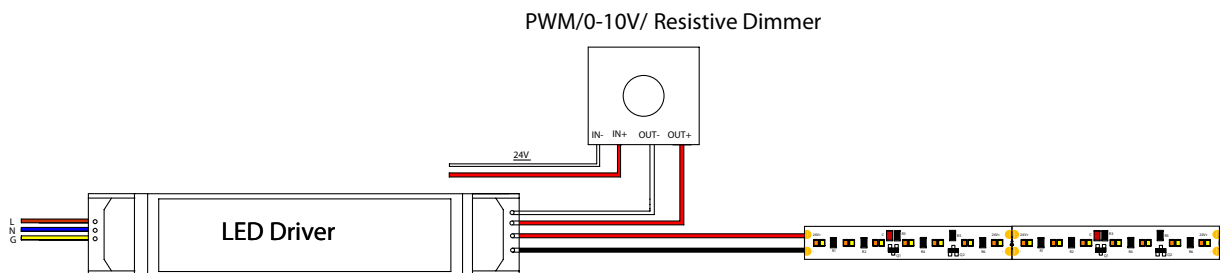
1. The Maximum and minimum lumen flux are based on $\pm 10\%$ of the typical rate.
2. The Maximum and minimum Power are based on $\pm 10\%$ of the typical rate.

Driver+LED strip+dimmer wiring diagram

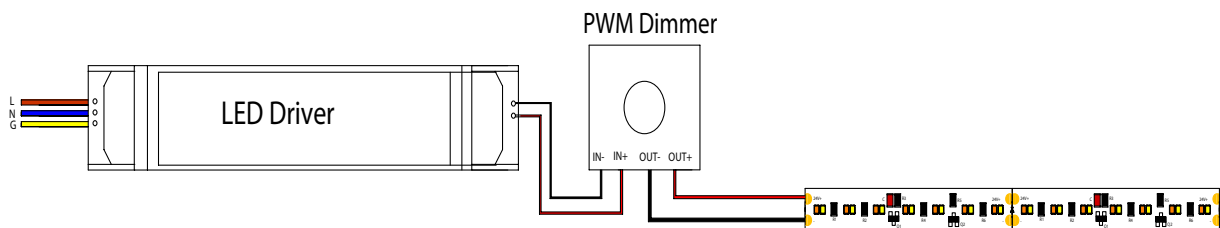
Mode 1: LED constant voltage TRIAC dimming driver + TRIAC dimmer



Mode 2: LED constant voltage PWM/ 0-10V/ resistance type three-in-one dimming driver + PWM/ 0-10V/resistance type dimmer



Mode 3: LED constant voltage no dimming driver + PWM dimmer



Driver+LED strip+dimmer wiring diagram

Energy classification

Storage temperature: -35...+70°C

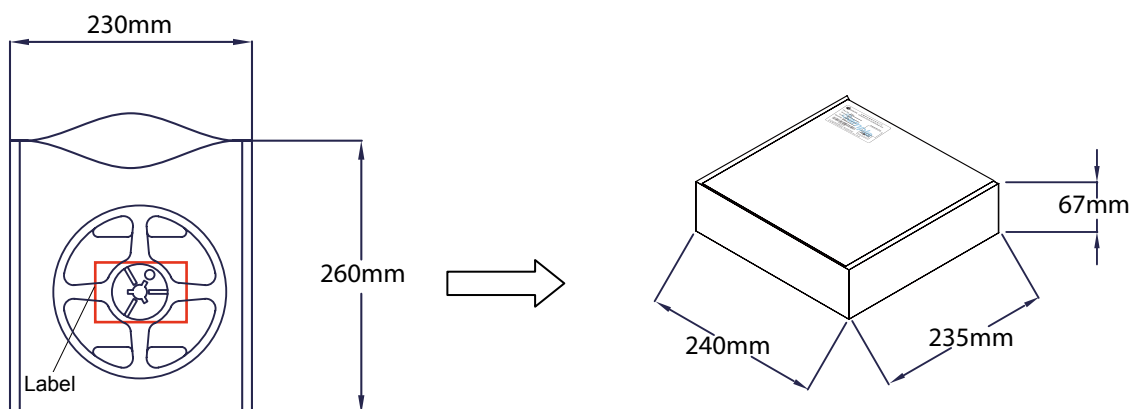
Operation only in noncondensing environment.

Humidity during processing of the modules should be between 0 to 70%



Product Packaging Information

Type	Anti-static bag size(mm)	Anti-static bags/ inner box(pcs)	Inner box/ carton(pcs)	Outside Carton size(mm)	GW.±5% (kg)
2216-224D/M IP20 CV24v Series	260x230x10	5	10	448x261x364	8.9



EX:

艾笛森光電股份有限公司 EDISON OPTO CORPORATION	
Part No. : 6LBR1WWJE0B35001	Inspected by:
Color : Warm White(273)	
Quantity : 1 Reel(5M)	
Lot No. : xxxx	
A410000005 Tel +86-2-82276996 Fax +86-2-8227-6997 4F No.800 Chung-Cheng ., Chung-Ho City Taipei, Taiwan	

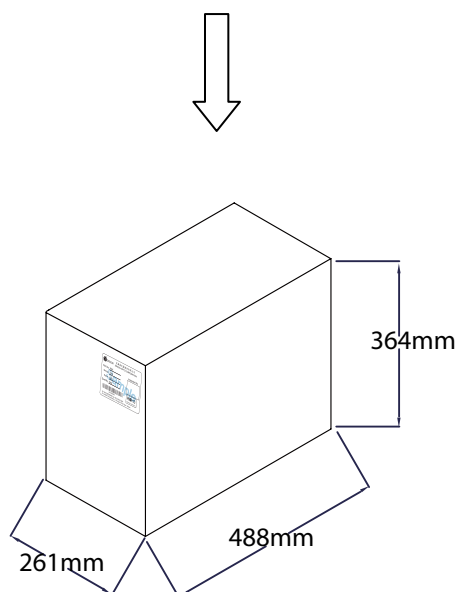
Label information

Part NO. : Order code

Color : Color(Emitter BIN color)

Quantity : The number of packing Lot

Lot NO. : Date code





Precaution for Use

1. DO NOT use the products with materials has Sulfur.
2. DO NOT assemble in humid environment or the conditions of containing oxidizing gas such as C1, H₂S, NH₃, SO₂, NOX, etc.
3. DO NOT add or change wires while the circuit of Module is active. Long time exposure to sunlight or UV should be avoided.
4. DO NOT press the product; even a slight pressure may damage the product. The environments such as high temperatures, high humidity or direct expose to sunlight should be avoided since the product is sensitive to these conditions.
5. Installation of LED modules (with power supplies) needs to be made with regard to all applicable and safety standards. Only qualified personnel should be allowed to perform installations.
6. Assembly must not damage or destroy conducting paths on the circuit board.
7. Please ensure that the power supply is of adequate power to operate the total load.
8. The maximum run length from any power feed should be limited to 5000 mm
9. Storage temperature: -35...+70°C, Operation only in non-condensing environment, Humidity during processing of the modules should be between 0 to 70%

Environmental Compliance

PLCC lightbar FPC series are compliant to the Restriction of Hazardous Substances Directive or RoHS. The restricted materials including lead, mercury cadmium hexavalent chromium, polybrominated biphenyls (PBB) and polybrominated diphenyl ether (PBDE) are not used in PLCC lightbar FPC series to provide an environmentally friendly product to the customers.

Application Notes

PLCC Lightbar series are available in red, yellow, green, blue, white, neutral white and warm white for application such as under-cabinet lighting, cove lighting and wall washing. Moreover, additional fine-tuned high color rendering index (CRI) version of white, neutral white and warm white all make PLCC Lightbar the ideal lighting choice for vividly building or decoration products, presenting the products outline.



Revision History

Versions	Description	Release Date
1	Establish order code information	2022/01/20

About Edison Opto

Edison Opto is a leading manufacturer of high power LED and a solution provider experienced in LDMS. LDMS is an integrated program derived from the four essential technologies in LED lighting applications- Thermal Management, Electrical Scheme, Mechanical Refinement, Optical Optimization, to provide customer with various LED components and modules. More Information about the company and our products can be found at www.edison-opto.com

Copyright©2022 Edison Opto. All rights reserved. No part of publication may be reproduced or transmitted in any form or by any means, electronic or mechanical, including photo copy, recording or any other information storage and retrieval system, without prior permission in writing from the publisher. The information in this publication are subject to change without notice.

www.edison-opto.com

For general assistance please contact:
service@edison-opto.com.tw

For technical assistance please contact:
LED.Detective@edison-opto.com.tw