



Catalog 2022



Edison Opto Corporation

Taipei Headquarter

17F., No. 17, Qiaoh Rd., Zhonghe Dist., New Taipei
City 235029, Taiwan

Yangzhou Factory:

No.101, West Huayang Road, Yangzhou City,
Jiangsu Province, 225009, China

T: +86-514-8777-7101 F: +86-514-8777-7102

E-mail: EEPL@edison-egypt.com

Contents

About us

Company Profile

Advantage

Reliability Test Facilities

Technology

Products

LED STREET LIGHT

3-10 SL series

11-16 SP series

17-22 SG series

23-26 SM series

27-28 RT series

LED FLOOD LIGHT

29-32 FL series

33-34 FY series

35-36 FS series

37-40 FZ series

41-46 FH series

LED HIGHBAY LIGHT

47-54 HL series

55-56 HQ series

57-58 HB series

59-62 HM series

EDISON



Edison was founded in 2001, LED lighting is our main products in the beginning and became a pioneer of lighting business in Taiwan. Since its establishment, Edison has been gradually developing products such as components, AC modules, horticulture lighting and professional lighting, in an attempt to expand the market and build a lighting integration and design service kingdom.

Edison set up professional lighting division in Yangzhou factory, focusing on 4 major categories of professional lighting fixtures - LED street lights, LED flood lights, LED highbay light and horticulture lights, established a scientific standard production and quality assurance process. With the most advanced LED technology and professional R&D capabilities, we have established vertical manufacturing integration and design solutions from component to module design, from optical lens operation to finished product development, opening up new markets and allowing our products to expand globally.

Today, from our headquarters in Taiwan, Edison has gradually expanded its factories to Dongguan and Yangzhou, China, and has established a subsidiary in California, expanding its business worldwide. With Taiwan and China as the main export destinations, Edison has further lit up Europe, America and the world.



The Edison Advantage

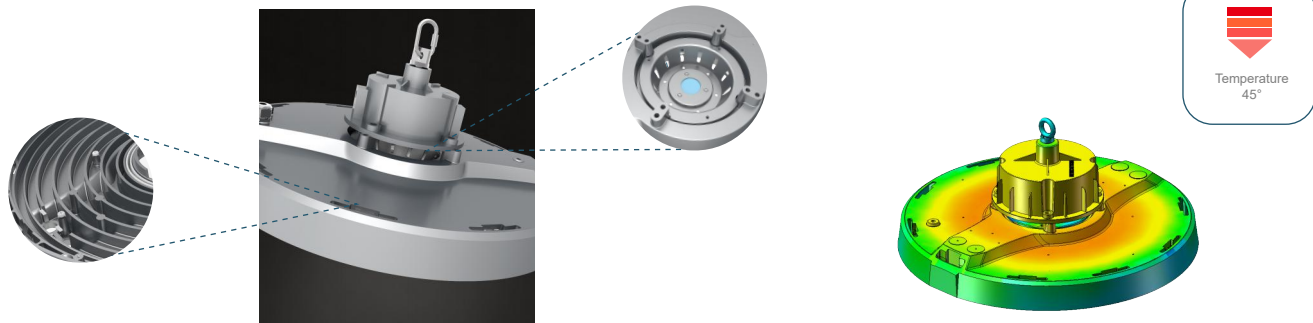
1.Optics

- a.More than 20 years of professional led chip R&D experience, high brightness, energy saving and high efficiency.
- b.Light distribution simulation, providing the most professional project light distribution solutions.
- c. High quality lens selection, minimal glare as well as brightness loss.



2.Structural design

- a. Professional structural engineers to provide high quality heat dissipation design to ensure the reliability of the product.
- b. Professional material selection program to maximize the cost performance of the lamps.




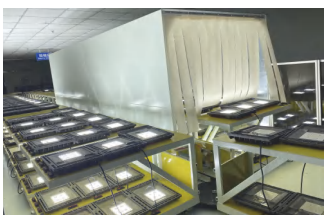
3.Electrical Design

- a.High quality power supply selection, isolation and non-isolation solutions, to provide the most suitable product solutions.
- b. Mainstream intelligent control, more efficient.

Wireless Control	Wired Control	Sensor Control
ZigBee,WiFi,LTE,W-CDMA	DALI,DMX-512,1-10V	Occupancy Sensor Daylight Sensor

Reliability Test Facilities

Edison laboratory, obtained the qualification of the Dekra visual laboratory in 2021. It has a variety of advanced experimental equipments, verify mechanical mechanisms, electrical performance of our products at the beginning of our developing.

	Temperature Cycle Test		IPX5/X6 Waterproof Test
	IK Impact Test		Salt Spray Test
	Wind shield		High Temperature Test
	Constant Temperature and Humidity Test		Static Load test
	Drop test Drop height:30~120cm Test weight:50kg		Aging test
	Insphere testing		

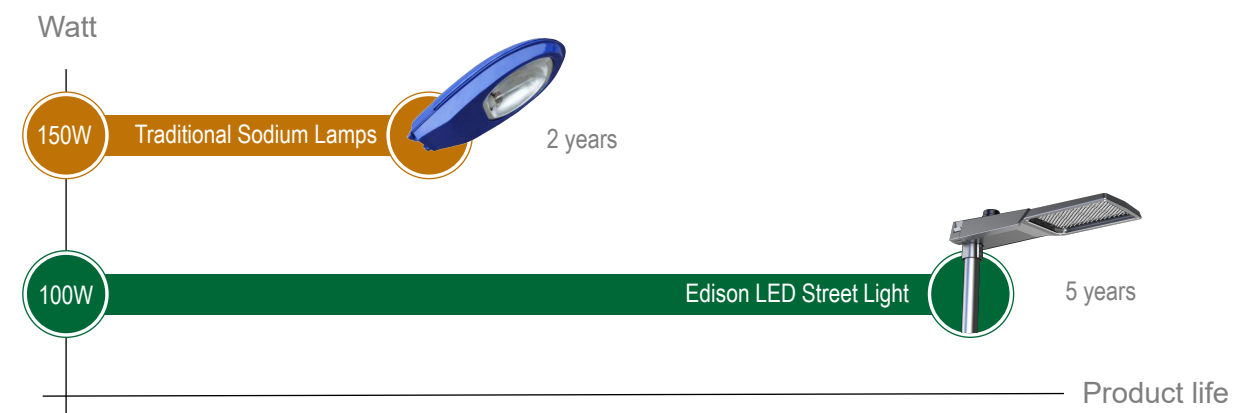
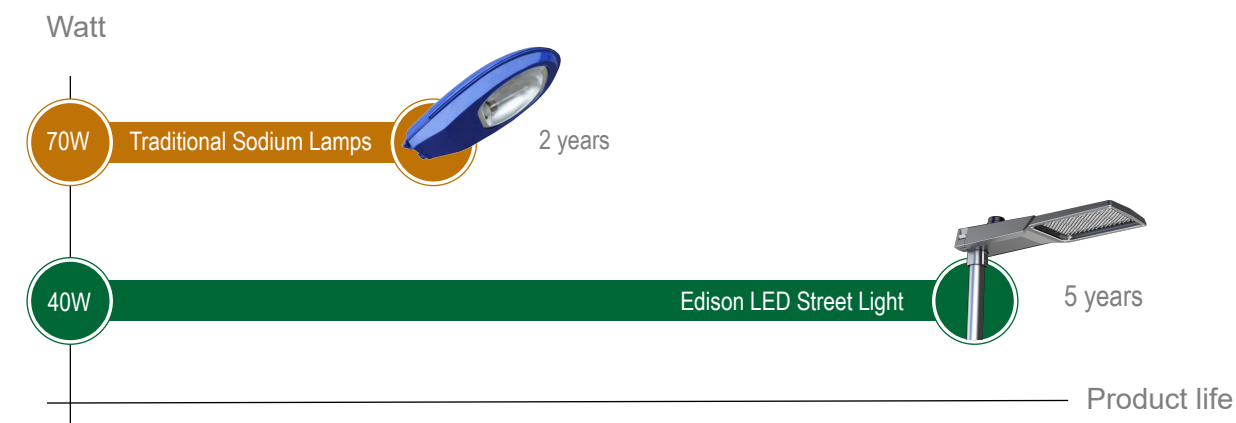
Technology

HPS Lamp Equivalent

With the increasing maturity of LED technology, high-pressure sodium lamp in a little bit out of the stage of lighting. However, some European countries, represented by Britain and France, are obsessed with the color of sodium lamp and the impact of white light on ecology at night, and more and more regions are in demand to regain the color of the European night in the last century.



With this background, Edison has developed the latest 2000K color temperature LED beads to avoid the problems of low luminous efficiency, short life span and low color rendering index of the original high-pressure sodium lamp, which is a near-perfect replica of the color of sodium lamp, and not only has the high fog penetration characteristics of the original sodium lamp, but also has the high life span, high color index, non-toxic and harmless of LED. Widely used in the replacement of sodium lamps, ancient street lighting, ecological city construction, as well as ports, docks and other foggy sections of the lighting.



HORTICULTURE LIGHTING

Horticulture lighting, by adjusting the light to give support according to the spectral configuration required by the different stages of the plant, maximizes the yield of various crops, shortens the crop cycle, promotes generation, etc.



Applied Plants



GROW LIGHTS FOR CANNABIS

For cannabis the necessary condition for flowering is the accumulation of certain phytochemical signals, which need to be accumulated continuously through the alternation of day and night, and we can manipulate this chemical signal through plant light supplementation in a controlled production environment to better control the growth and yield of the plant.



GROW LIGHTS FOR SOLANUM

The demand for light is different in different stages of solanaceous, such as tomatoes and cucumbers, and the demand for high light during the fruiting period makes plant light supplementation especially important, which can greatly supplement the light required by plants, greatly improve the yield and reduce the growth cycle.



Highbay

Horticulture light

Linear Light

Sports light

Flood light

Street Light



LED STREET LIGHT

Street lighting has now become an important investment for most municipalities, edison can provide the most professional lighting solutions to meet the needs of different projects, and significantly reduce energy consumption and maintenance costs without sacrificing performance.



SL-Series **P3-10**
50W-300W
140Lm/W,160Lm/W
2000K,2700K,3000K,4000K,5700K
TYPE I,TYPE II,TYPE III,TYPE IV,TYPE V
Tempered glass
IP66,IK08
5 years
CE,CB,ENEC,ENEC+



SP-Series **P11-16**
30W-200W
150Lm/W,170Lm/W
2000K,3000K,4000K,5700K
TYPE II
IP66,IK08
3 years
CE,CB,ENEC



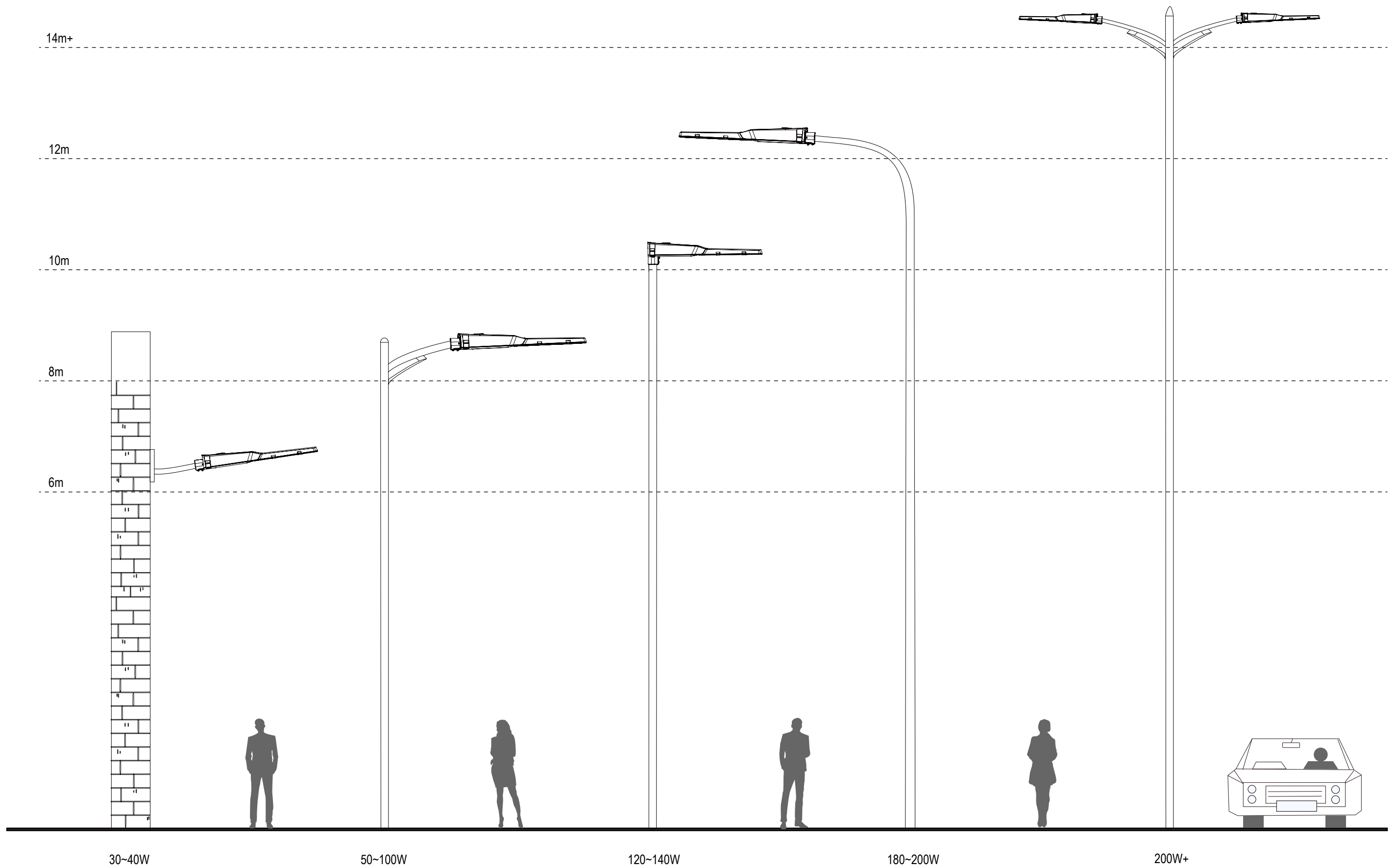
SG-Series **P17-22**
40W-100W
130Lm/W,150Lm/W
2000K,3000K,4000K,5700K
TYPE I,TYPE II,TYPE III,TYPE IV,TYPE V
Tempered glass
IP66,IK08
5 years
CE,CB,ENEC,ENEC+



SM-Series **P23-26**
80W-480W
150Lm/W,170Lm/W
2000K,3000K,4000K,5700K
TYPE II,TYPE III
Tempered glass
IP66,IK08
5 years
CE



RT-Series **P27-28**
16W-65W
200Lm/W
2700/3000/4000/5700K
TYPE II,TYPE III
IP66
3/5 years
CE



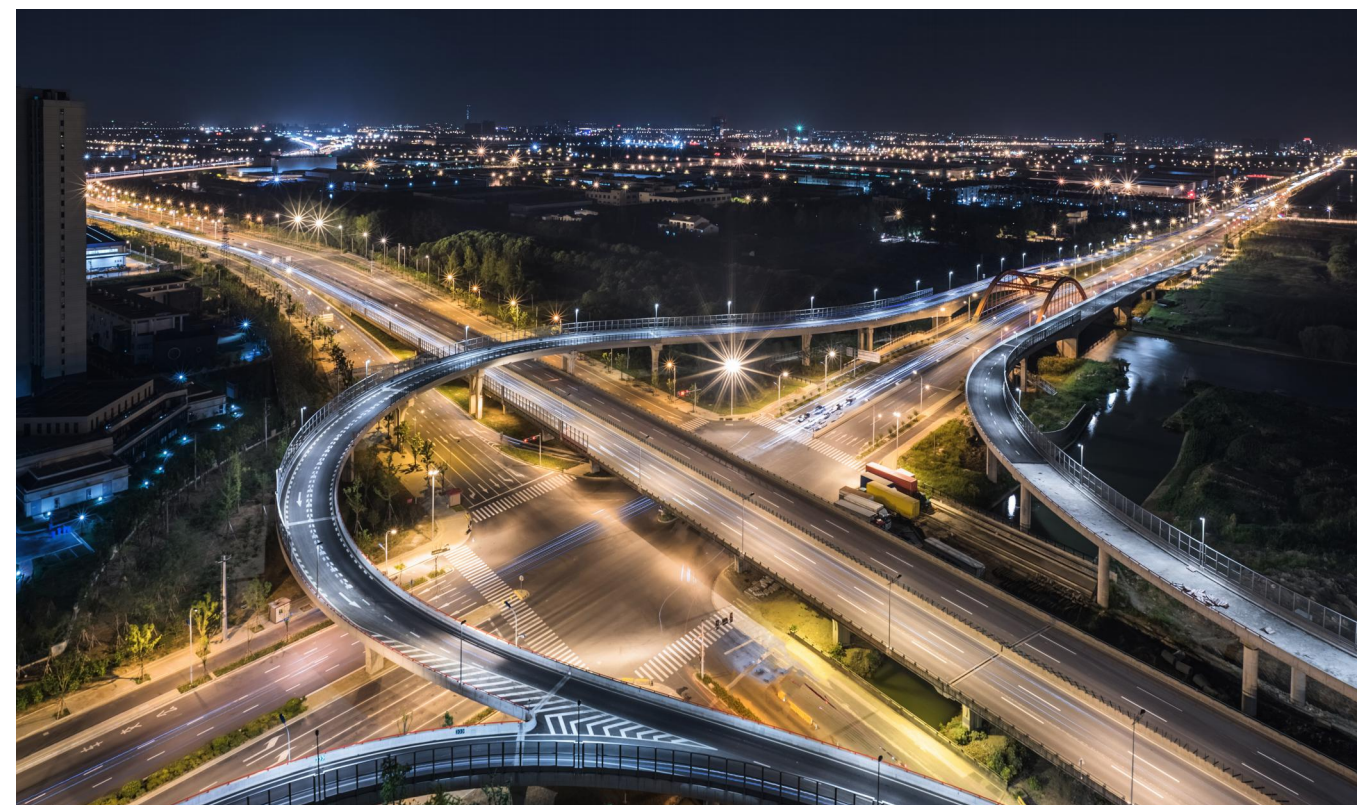
SL SERIES

Professional lighting street light



SL SERIES

SL is a high performance series street light providing ultra-flexible lighting solution. The luminaire is specifically designed with long-lasting performance, with high-pressure die-casting aluminum, IK08 tempered glass and superior heat-sink management. It is designed with ZHAGA and NEMA socket to provide numerous control options, available with 0-10V, DALI or custom dimming profile.



Key Features

- Die-cast aluminum housing;
- IP66 , IK08 protection + tempered glass;
- Numerous optics options;
- Smart upgrade;



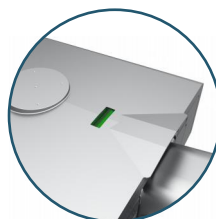
SL2

SL4

SL6

Free tool Maintenance

Tool-free and upside Opening for easy access to the electric compartment.



Level gauge

The level is easy to install.

Photometric Flexibility

Numerous optics options for a wide range of application



Robust structure considering IK08 and IP66 protection

Excellent Heat Dissipation

The lamp is equipped with a respirator, which can effectively export heat and water vapor.

Power-off Automatically

Electrical disconnecter (automatic disconnection of the power supply)



Support rod

Support rod for easy mounting and maintenance



Free-tool Driver Replacement

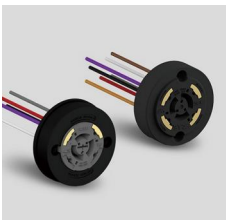
Detachable driver fixing plate, convenient replaceable for led driver.(only SL6)

Smart upgrade

The street light can be intelligently controlled to switch between different modes to meet different needs, save costs and prolong service life.

NEMA (Optional)

NEMA lighting socket can be realized, based on network lighting control Electricity and mechanical connection between system and lighting equipment, mention For 0-10V lighting and other auxiliary functions.



DALI CONTROL (Optional)

The lamp can be controlled by the computer network.

0-10V Dimming (Optional)

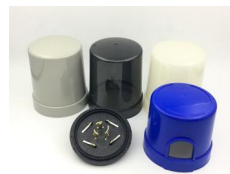
Luminance can be divided into 10 level,set it upon your needs.

5-Step Timming (Optional)

we can set the lamp to work at a specific time to save cost.

Photocell (Optional)

The light operating depends on the ambient luminance.When it is dark or dawn,it will lighten with a suitable luminance automatically



Key Characteristic

Standard Version

Item	SL2		SL4		SL6	
Power(W)	50	100	150	180	240	300
Efficiency(Lm/W)	140*					
Luminous flux(Lm)	7000	14000	21000	25200	33600	45000
CRI(Ra)	70					
Input voltage	AC100-240V** 50-60Hz					
CCT(K)	2000***, 3000, 4000, 5700					
PF	0.95					
Surge protection(KV)	5/10****					

LED: SMD5050 Edison, LUMILEDS,BRIDGELUX

Driver: MOSO, PHILIPS

Body: High-Pressure Die-cast Aluminum

Protector: Tempered Glass

* Efficiency rated at CCT 4000K

** MOSO: 100-240V; PHILIPS:220-240V

*** 2000K Sodium equivalent

**** MOSO: 5/10KV

High Efficiency Version

Item	SL2-H		SL4-H		SL6-H	
Power(W)	50	100	150	180	240	300
Efficiency(Lm/W)	160*					
Luminous flux(Lm)	8000	16000	24000	28800	38400	48000
CRI(Ra)	70					
Input voltage	AC100-240V** 50-60Hz					
CCT(K)	2000***, 3000, 4000, 5000,5700					
PF	0.95					
Surge protection(KV)	5/10****					

LED: SMD 5050Edison, LUMILEDS,BRIDGELUX

Driver: MOSO, PHILIPS

Body: High-Pressure Die-cast Aluminum

Protector: Tempered Glass

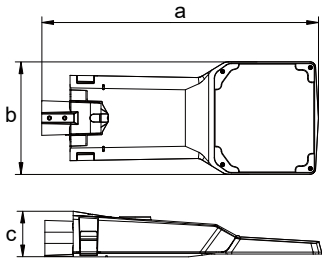
* Efficiency rated at CCT 4000K

** MOSO: 100-240V; PHILIPS: 220-240V

*** 2000K Sodium equivalent

**** MOSO: 5/10KV

Dimensions



SL2	a578*b235*c95mm
SL4	a770*b235*c95mm
SL6	a895*b339*c107mm



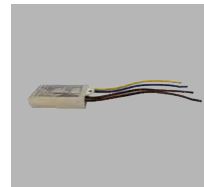
Accessories



Wiring Connector
(IP66)



Input cable
0.3/1/5m



10/20KV SPD



Wall bracket

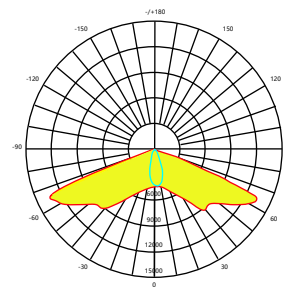


48mm adaptor

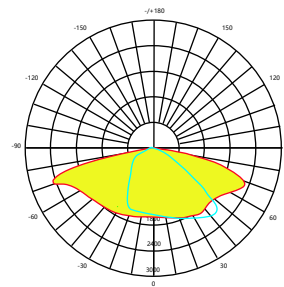


76mm adaptor

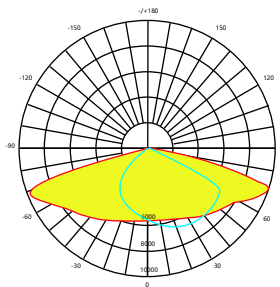
Light Distribution



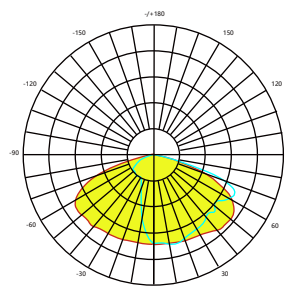
Type I



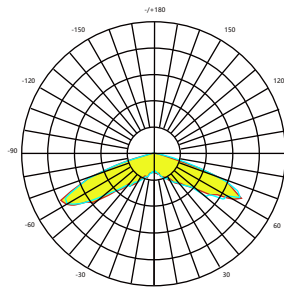
Type II



Type III



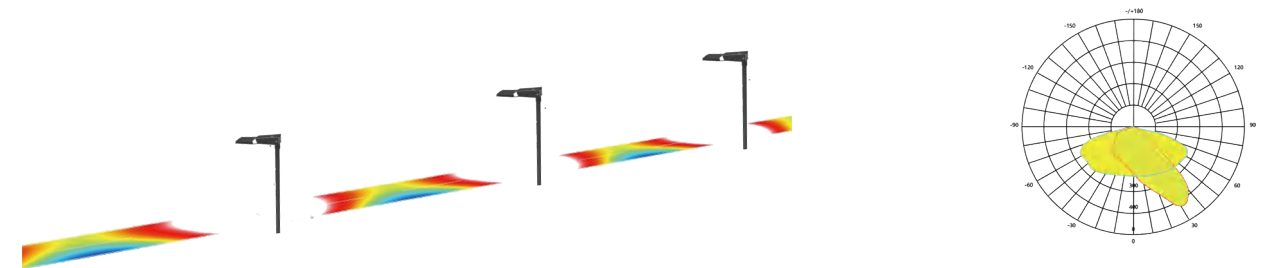
Type IV



Type V

Lighting Engineering Design Solution

Road Width: 7m ; Grid: 10 x Points ; tarmac: R3 , q0: 0.070 ; Selected Lighting Class: ME4a

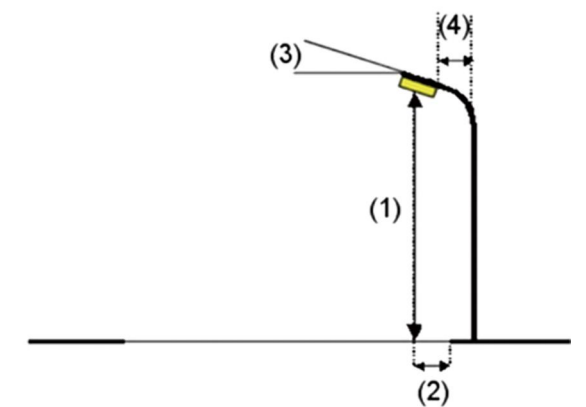
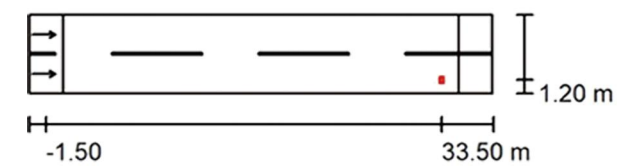


Lamp selection: Article No.: SL , Luminous flux (Luminaire): 13200 lm
Luminous flux (Lamps): 13200 lm , Luminaire Wattage: 102.3W
Luminaire classification according to CIE: 100, CIE flux code: 38 73 95 100

100

Pole Distance: 35.000 m
Mounting Height (1): 8.000 m
Height: 7.0 m
Overhang (2): 0.5 m
Boom Angle (3): 5.0 °
Boom Length (4): 1.500 m

Eav[lx]=20lux



	[cd/m²]	U0	UI	TI [%]
Calculated values:	1.32	0.58	0.66	10
Required values according to class ME4a:	≥ 0.75	≥ 0.40	≥ 0.60	≤ 15
Fulfilled/Not fulfilled:	✓	✓	✓	✓

SP SERIES

Cost effective



170
LM/W

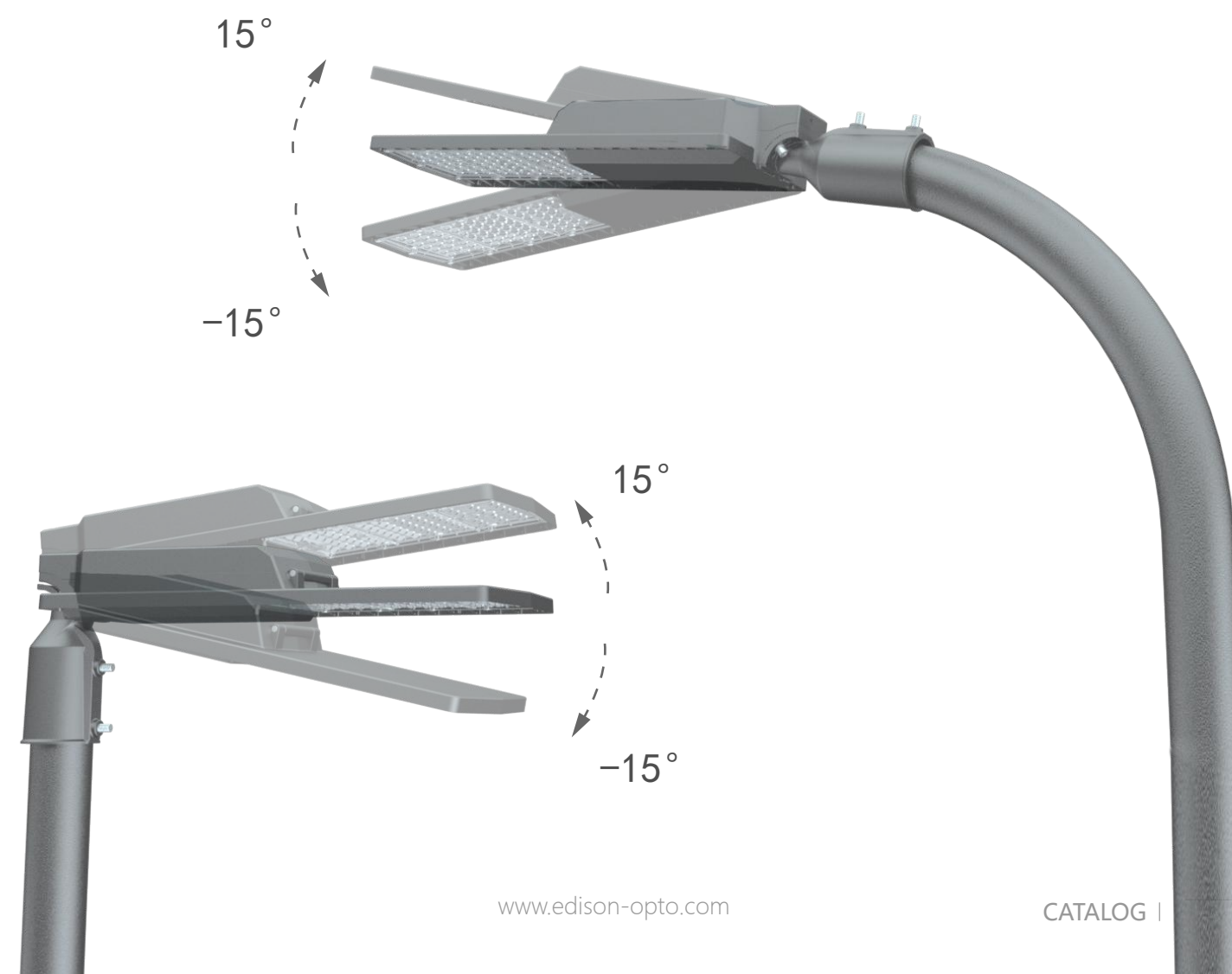
SP SERIES

SP Street Light Series is an energy-saving LED street light for a wide range of application. It is featured with excellent heat sink design as well as superior optical design. It provides long-lasting performance even in a diverse environment. The fixture is the best platform to achieve optimal balance between performance and cost.



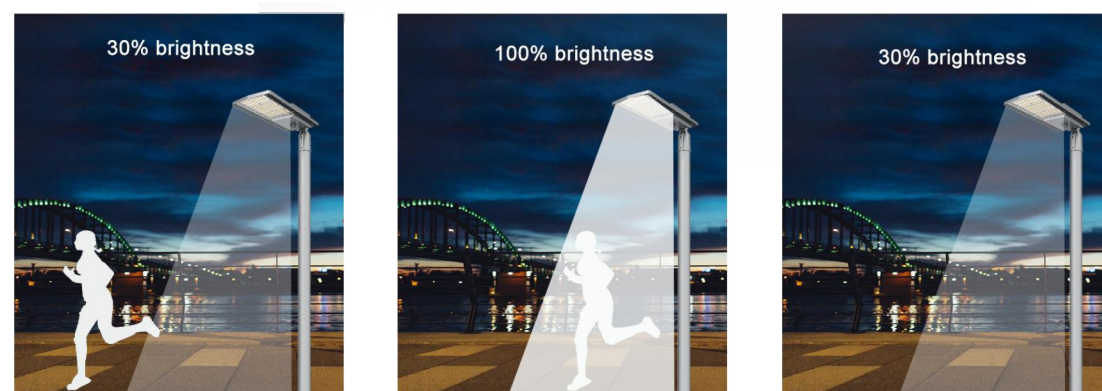
Various mounting

Support horizontal and vertical installation, $-15^{\circ} \sim +15^{\circ}$ adjustable angle range, solve the problem of uneven illumination on various wide and narrow roads.



Smart upgrade

The whole Light has a Zhaga intelligent lighting interface, which can be upgraded and installed with a Zhaga base according to the needs, equipped with a controller, and intelligentized to trigger various lighting levels that meet the exact needs of users at a specific place and time. This flexibility brings maximum safety and comfort to the end user with the lowest energy consumption.



Intelligent Control

DALI CONTROL (Optional)

The lamp can be controlled by the computer network.

0-10V Dimming (Optional)

Luminance can be divided into 10 level, set it upon your needs.

5-Step Timing (Optional)

We can set the lamp to work at a specific time to save cost.

Full Power for Various Roads

SP has four size that compatible with different power which happens for all kinds of roads

CLASS I & CLASS II

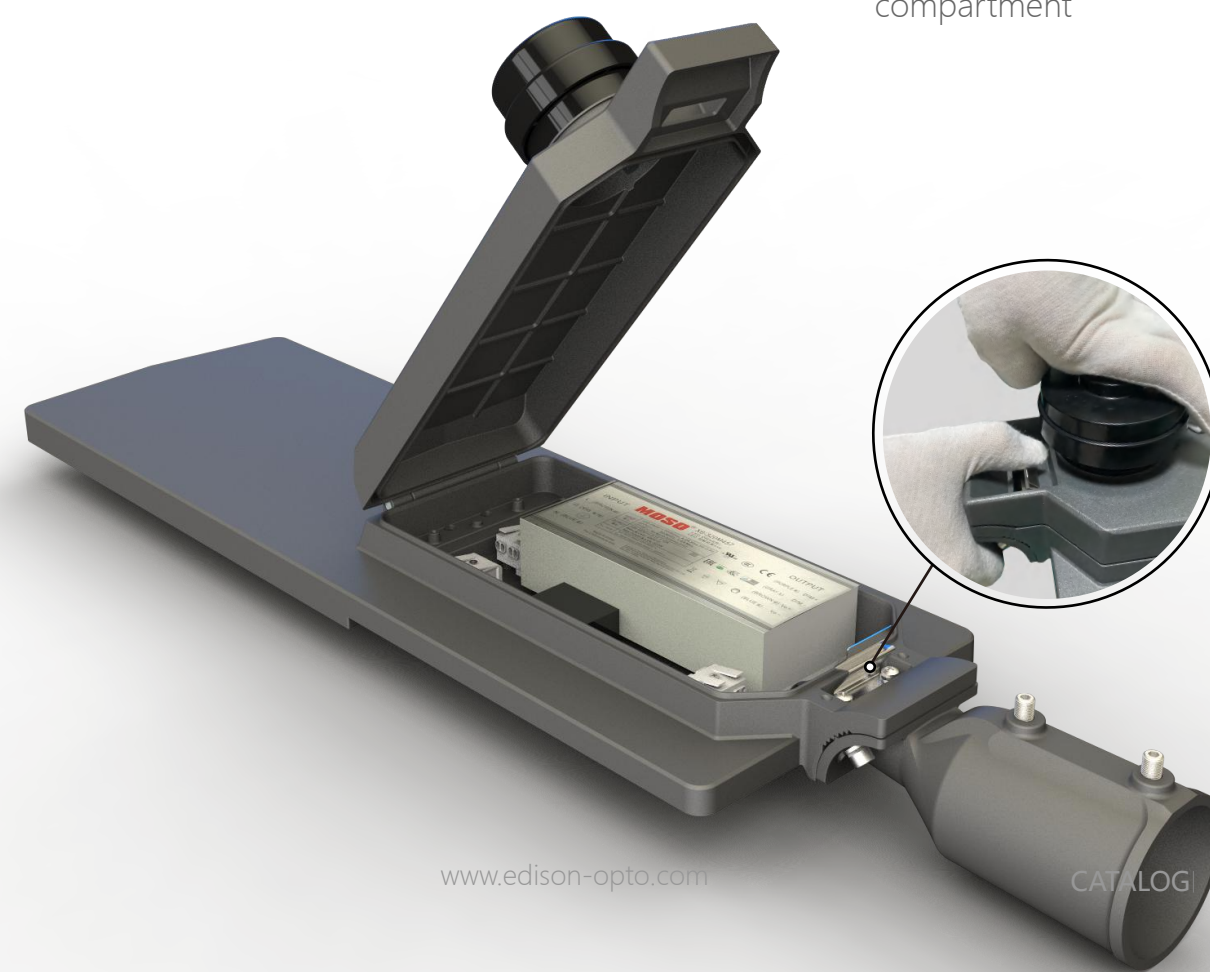


IP66 & IK08

The fixture reaches IP66 and IK08 rating.

Easy Access

Tool-free and upside opening for easy access to the electric compartment



Key Characteristic

Standard Version

Item	SP1		SP2		SP3		SP4	
Power(W)	30	40	50	60	100	120	150	200
Efficiency(Lm/W)	150 *							
Luminous flux(Lm)	4500	6000	7500	9000	15000	18000	22500	30000
CRI(Ra)	70							
Input voltage	AC 220 -240 V 50 -60 Hz							
CCT(K)	2000** , 3000 , 4000 , 5700							
PF	0.95							
Surge protection(KV)	4/6							

LED: SMD3030/5050 Edison,
Driver: Edison no-isolated LED driver
Body: High-Pressure Die-cast Aluminum

* Efficiency rated at CCT 4000K
** 2000K Sodium equivalent

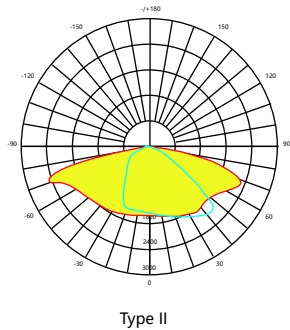
High Efficiency Version

Item	SP1-H		SP2-H		SP3-H		SP4-H	
Power(W)	30	40	50	60	100	120	150	200
Efficiency(Lm/W)	170 *							
Luminous flux(Lm)	5100	6800	8500	10200	17000	20400	25500	34000
CRI(Ra)	70							
Input voltage	AC 220 -240 V 50 -60 Hz							
CCT(K)	2000** , 3000 , 4000 , 5700							
PF	0.95							
Surge protection(KV)	4/6							

LED: SMD3030/5050 Edison,
Driver: Edison no-isolated LED driver
Body: High-Pressure Die-cast Aluminum

* Efficiency rated at CCT 4000K
** 2000K Sodium equivalent

Light Distribution



Accessories



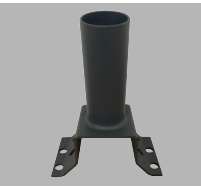
Wiring Connector (IP66)



Input cable 0.3/1/5m



10/20KV SPD



Wall bracket

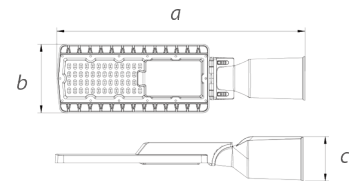


48mm Spigot

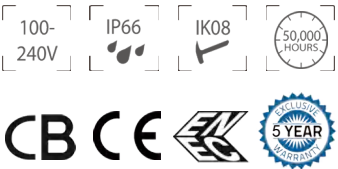


76mm Spigot

Dimensions



SP1	a425*b117*c76mm
SP2	a494*b155*c76mm
SP3	a623*b200*c93mm
SP4	a711*b200*c93mm

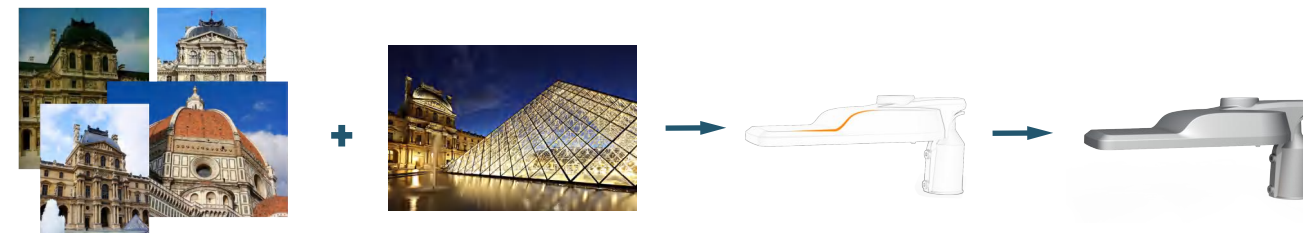


SG SERIES

Create for Europe

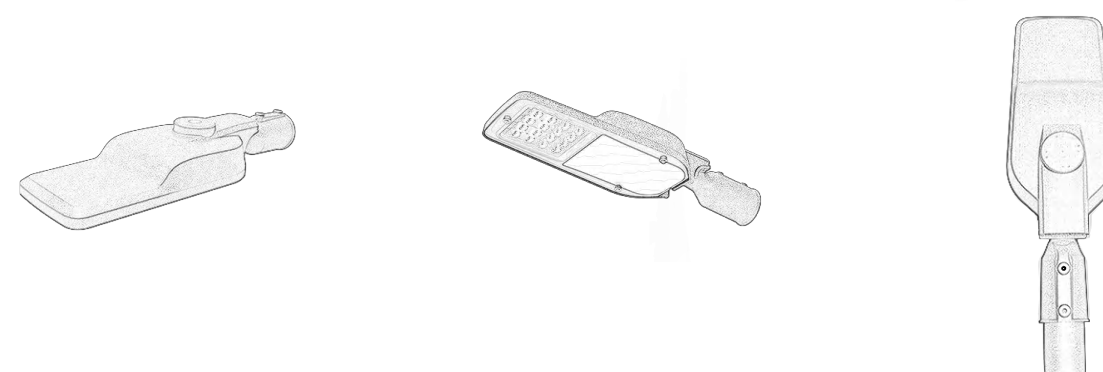


- Die-cast aluminum housing, robust structure;
- IP66 protection;
- Numerous optics options;
- Brand controller;



ID Design

This lamp is mainly recommended for the second category. In order to cater to European street architecture, the designer designed SG based on the representative arc-shaped roof, so that it can be perfectly integrated into the environment.



Unchangeable Europe

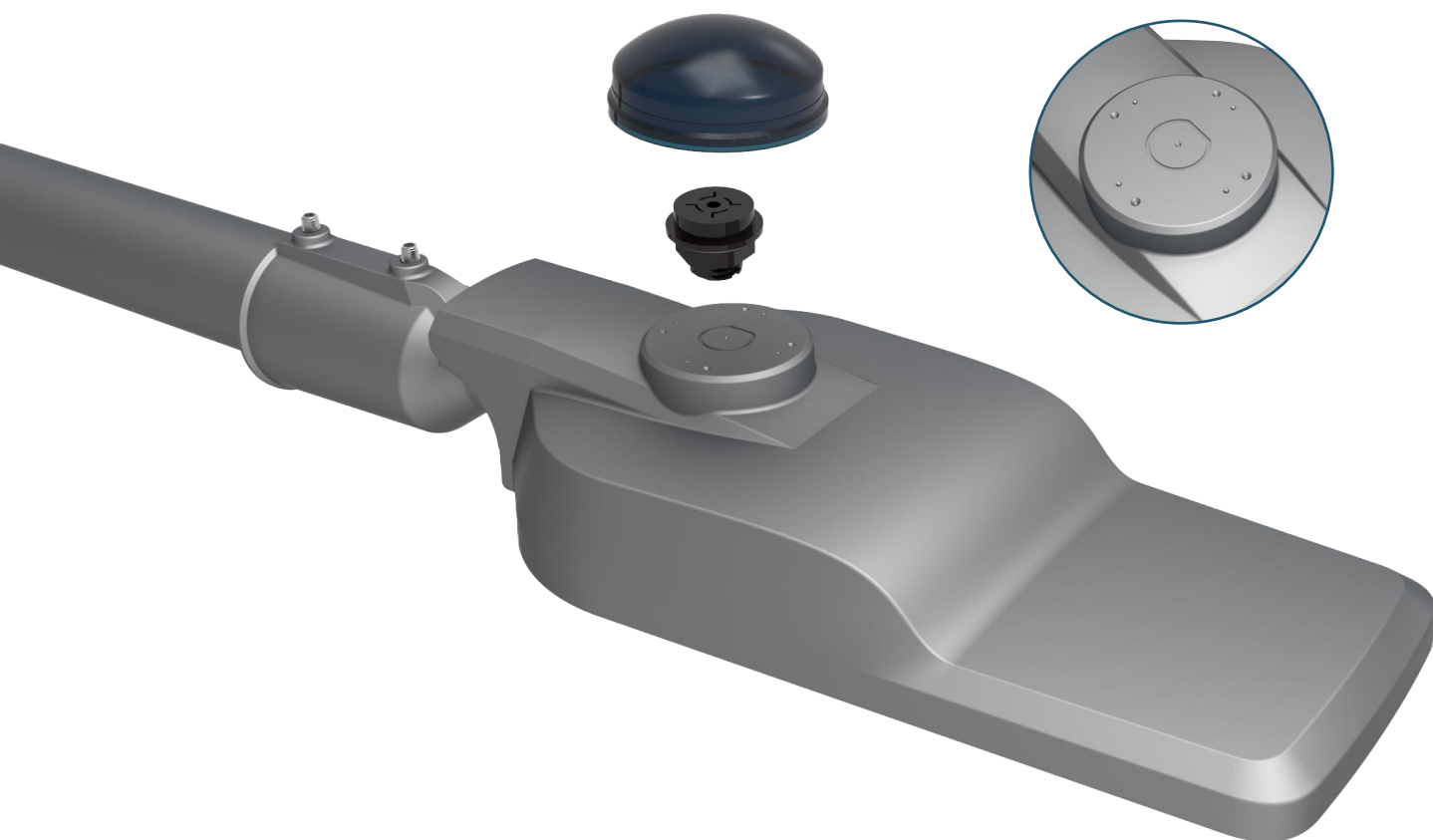


2000K 2700K 3000K 4000K 5700K

In order not to change the lighting characteristics of Europe at night, the color temperature of the whole lamp can be selected from 2000K-5700K.

Smart upgrade

The whole Light has a Zhaga intelligent lighting interface, which can be upgraded and installed with a Zhaga base according to the needs, equipped with a controller, and intelligentized to trigger various lighting levels that meet the exact needs of users at a specific place and time. This flexibility brings maximum safety and comfort to the end user with the lowest energy consumption.



Intelligent Control

DALI CONTROL (Optional)

The lamp can be controlled by the computer network.

0-10V Dimming (Optional)

Luminance can be divided into 10 level, set it upon your needs.

5-Step Timing (Optional)

We can set the lamp to work at a specific time to save cost.

IP66 and IK08

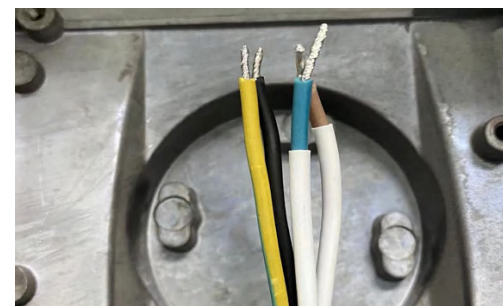
Remarkable designed with good IP66 rating and IK08 protection.

Light Efficiency up to 150Lm/w

SG can use high efficiency LED to save energy.

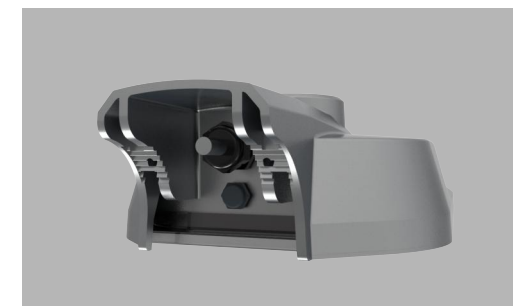
CLASS II

Class II driver that covered with plastic contributes to double insulated. Electric leakage and any dangerous accident are impossible to happen.



Vent

There is a vent to balance the atmosphere pressure and to prevent moisture.



Key Characteristic

Standard Version

Item	SG1		SG2(pending)	
Power(W)	40	60	80	100
Efficiency(Lm/W)	130*			
Luminous flux(Lm)	5200	7800	10400	13000
CRI(Ra)	70			
Input voltage	AC220-240V 50-60Hz			
CCT(K)	2000**, 3000, 4000, 5700			
PF	0.95			
Surge protection(KV)	4			

LED: SMD5050 Edison,

Driver: Edison isolated LED driver

Body: High-Pressure Die-cast Aluminum
Protector: Tempered Glass

* Efficiency rated at CCT 4000K

** 2000K Sodium equivalent

High Efficiency Version

Item	SG1-H		SG2-H(pending)	
Power(W)	40	60	80	100
Efficiency(Lm/W)	150*			
Luminous flux(Lm)	6000	9000	12000	15000
CRI(Ra)	70			
Input voltage	AC220-240V 50-60Hz			
CCT(K)	2000**, 3000, 4000, 5700			
PF	0.95			
Surge protection(KV)	4			

LED: SMD5050 Edison,

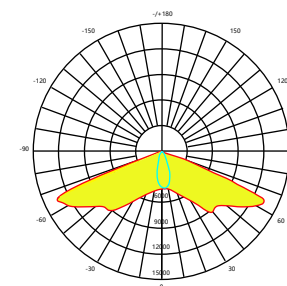
Driver: Edison isolated LED driver

Body: High-Pressure Die-cast Aluminum
Protector: Tempered Glass

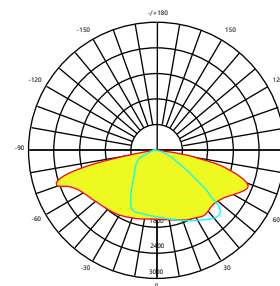
* Efficiency rated at CCT 4000K

** 2000K Sodium equivalent

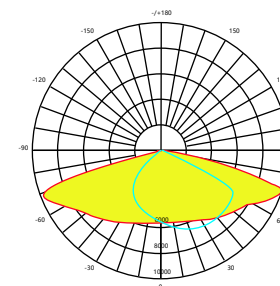
Light Distribution



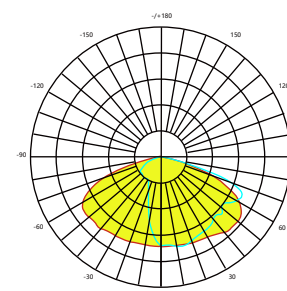
Type I



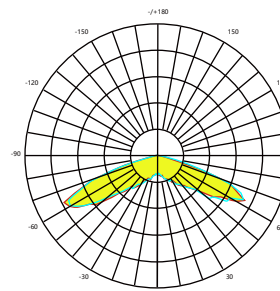
Type II



Type III



Type IV



Type V

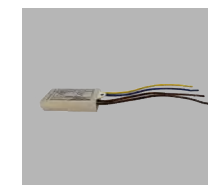
Accessories



Wiring Connector
(IP66)



Input cable
0.3/1/5m



10/20KV SPD



Wall bracket

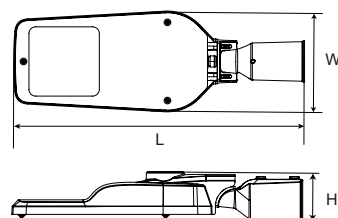


48mm Spigot



76mm Spigot

Dimensions



SG1	L520*W180*H90mm
-----	-----------------



SM SERIES

Modular Design



Photometric Flexibility

Modularized installation



Safe Electric Disconnecter

Immediate, automatic disconnection of power supply when opening

Simple, Smooth and Self-clean

SM is unmatched both in aesthetics and function by preventing dust.

Physical Dimensions

White

Black



Key Characteristic

Standard Version

Item	SM2	SM3	SM4	SM5	SM6
Power(W)	80	120	160	200	240
Efficiency(Lm/W)	170 *				
Luminous flux(Lm)	13600	20400	27200	34000	40800
CRI(Ra)	70				
Input voltage	AC 100 -240 V 50 -60 Hz				
CCT(K)	2000** , 3000 , 4000 , 5700				
PF	0.95				
Surge protection(KV)	5/10				

LED: SMD 5050 Edison,
Driver: PHILIPS,MOSO
Body: High-Pressure Die-cast Aluminum

* Efficiency rated at CCT 4000K
** 2000K Sodium equivalent

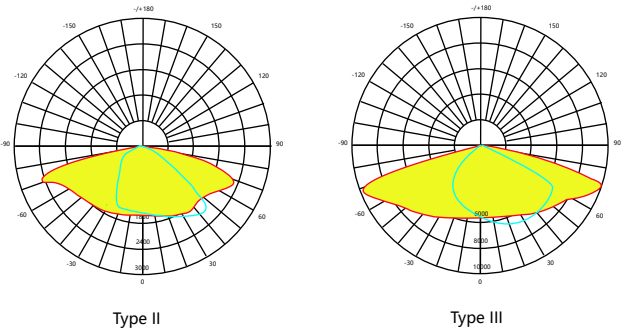
High Efficiency Version

Item	SM2-H	SM3-H	SM4-H	SM5-H	SM6-H
Power(W)	160	240	320	400	480
Efficiency(Lm/W)	150 *				
Luminous flux(Lm)	24000	36000	48000	60000	72000
CRI(Ra)	70				
Input voltage	AC 100 -240 V 50 -60 Hz				
CCT(K)	2000** , 3000 , 4000 , 5700				
PF	0.95				
Surge protection(KV)	5/10				

LED: SMD 5050 Edison,
Driver: PHILIPS,MOSO
Body: High-Pressure Die-cast Aluminum

* Efficiency rated at CCT 4000K
** 2000K Sodium equivalent

Light Distribution



Dimensions

SM2	L695*W363*H123mm
SM3	L775*W363*H123mm
SM4	L855*W363*H123mm
SM5	L935*W363*H123mm

100-240V

IP66

IK08

50,000 HOURS

CB CE

5 YEAR WARRANTY

RT SERIES

Solar street light



Key Characteristic

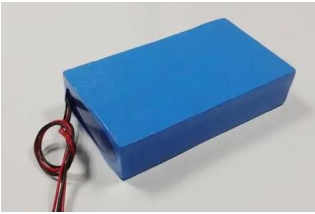
Standard Version

Item	RT1	RT2	RT3
Power (W)	16	32	65
Efficiency (Lm/W)	200		
Luminous flux(Lm)	3200	6400	13000
Solar panel Power(W)	50	80	160
Battery	12.8V 20AH	12.8V 40AH	12.8V 60AH
System voltage(V)	12	12	12
CCT(K)	3000, 4000, 5700		
Warranty	3/5years		

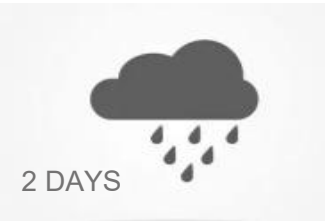
LED: SMD 5050 Edison,
Brand controller
Body: Die-cast aluminum
housing, robust structure



Integrated design for easy
installation

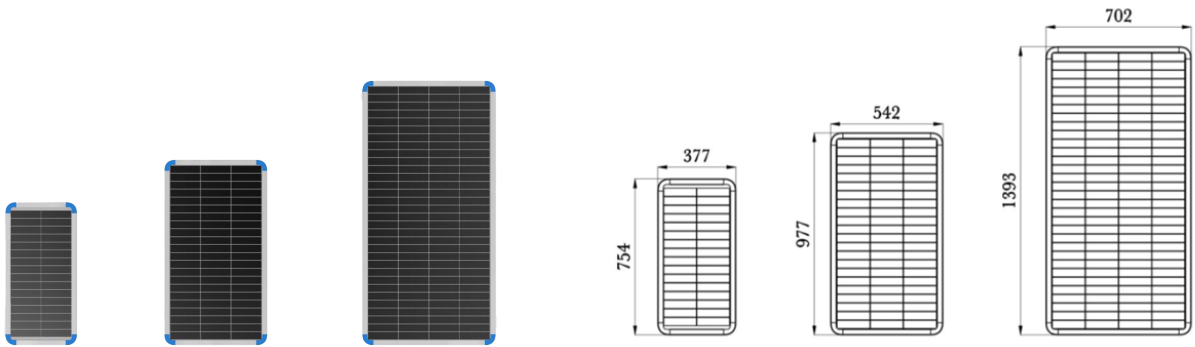


Lithium iron phosphate flexible
package safe and reliable

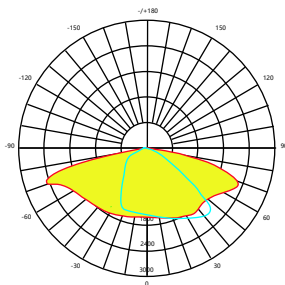


2 DAYS

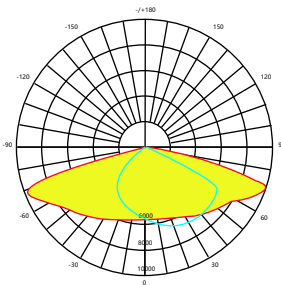
continue operating for
2 rainy days



Light Distribution



Type II



Type III

LED FLOOD LIGHT

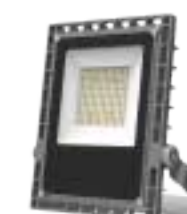
Edison flood light designed for Area lighting ,Sport lighting,Parking lot etc. Full power ranges and symmetric or asymmetric beam angles to satisfy the most application needs.



FL-Series

P29-32

50W-200W
140lm/W,160lm/W
2000K,2700K,3000K,4000K,5700K
12°/30°/60°/90°/Asymmetric
Tempered glass
IP66, IK08
5 years
CE,CB,ENEC



FY-Series

P33-34

100W-150W
130lm/W
3000K,4000K,5700K
120°
IP66, IK08
3 years
CE,CB



FS-Series

P35-36

50W-200W
140lm/W
3000K,4000K,5700K
30°/60°/90°/Asymmetric
Tempered glass
IP66, IK08
5 years
CE



FZ-Series

P37-40

20W-480W
140lm/W,160lm/W
4000K,5700K
30°/60°/90°/Type II
IP66, IK08
5 years
CE,CB,ENEC



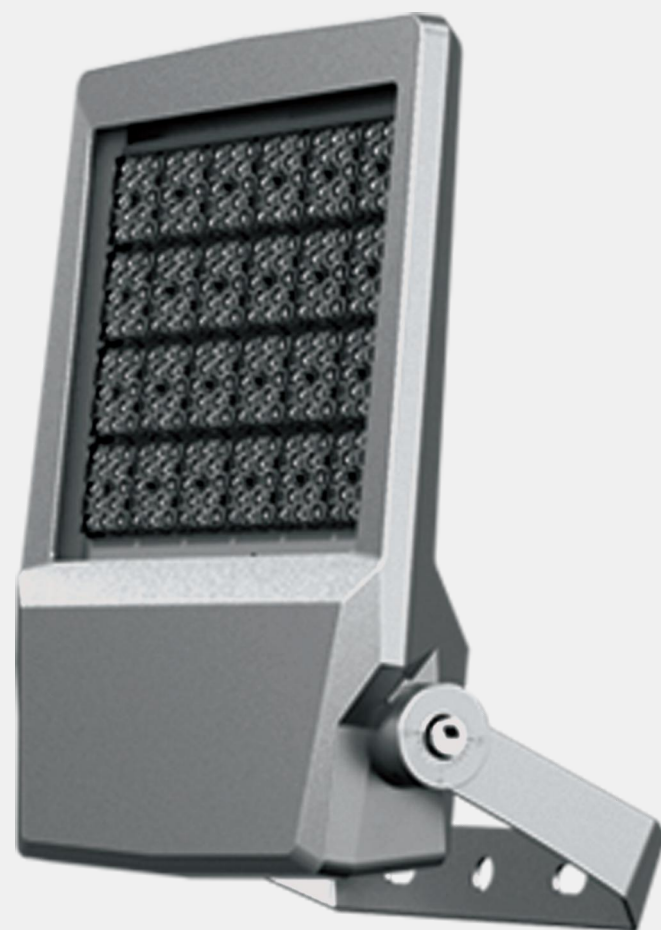
FH-Series

P41-46

250W-1000W
150lm/W,160lm/W
2700/3000/4000/5700K
12°/20°/40°/60°/90°/Asymmetric
IP66, IK08
5 years
CE,CB,ENEC

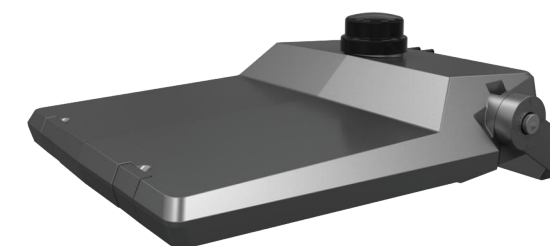
FL SERIES

Intelligent control system



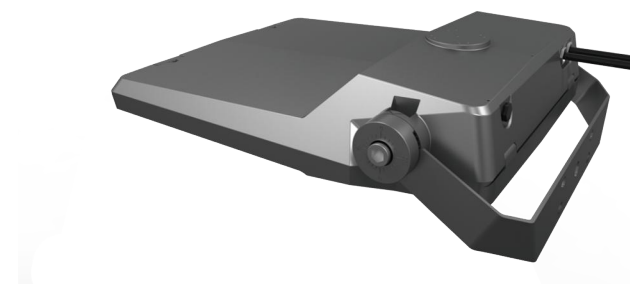
Smart Upgrade

NEMA receptacle for smart upgrade



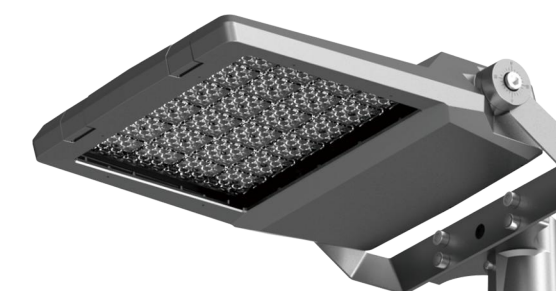
Double Input cable

AC input cable+ dimming input cable



Versatile Mounting Option

Various accessories provides versatile mounting options



Photometric Flexibility

Numerous symmetric and asymmetric optics options



Key Characteristic

Standard Version

Item	FL2		FL4	
Power(W)	50	100	150	200
Efficiency(Lm/W)	140*			
Luminous flux(Lm)	7000	14000	21000	28000
CRI(Ra)	70			
Input voltage	AC220-240V 50-60Hz			
CCT(K)	3000,4000, 5700			
PF	0.95			
Surge protection(KV)	5/10			

LED: SMD3030 Edison,
Driver: MOSO
Body: High-Pressure Die-cast Aluminum
Protector: Tempered Glass

* Efficiency rated at CCT 4000K

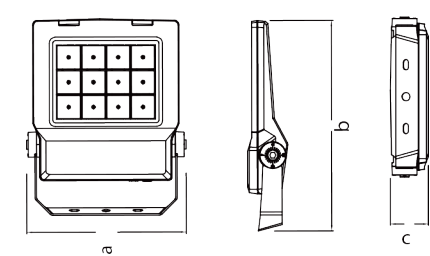
High Efficiency Version

Item	FL2-H		FL4-H	
Power(W)	50	100	150	200
Efficiency(Lm/W)	160*			
Luminous flux(Lm)	8000	16000	24000	32000
CRI(Ra)	70			
Input voltage	AC220-240V 50-60Hz			
CCT(K)	3000, 4000, 5700			
PF	0.95			
Surge protection(KV)	5/10			

LED: SMD5050 Edison,
Driver: MOSO
Body: High-Pressure Die-cast Aluminum
Protector: Tempered Glass

* Efficiency rated at CCT 4000K

Dimensions



FL2	a300*b386*c78mm
FL4	a390*b485*c95.5mm



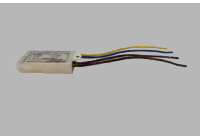
Accessories



Wiring Connector
(IP66)



Input cable
0.3/1/5m



10/20KV SPD



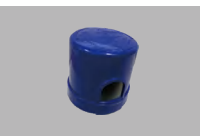
NEMA receptacle



Pole mounting adaptor

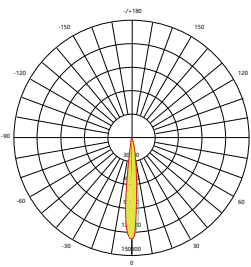


Short cap

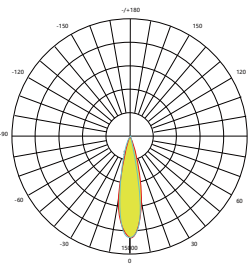


Photocell

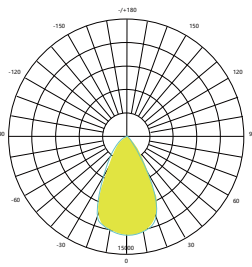
Light Distribution



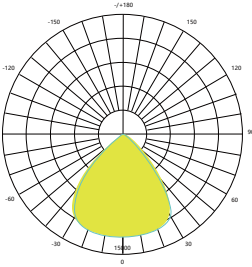
12°



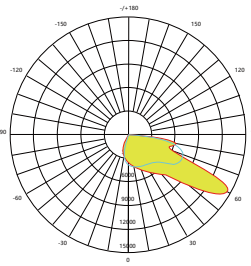
30°



60°



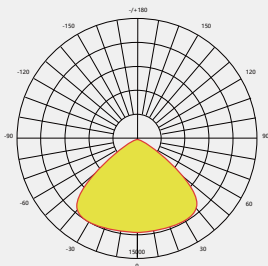
90°



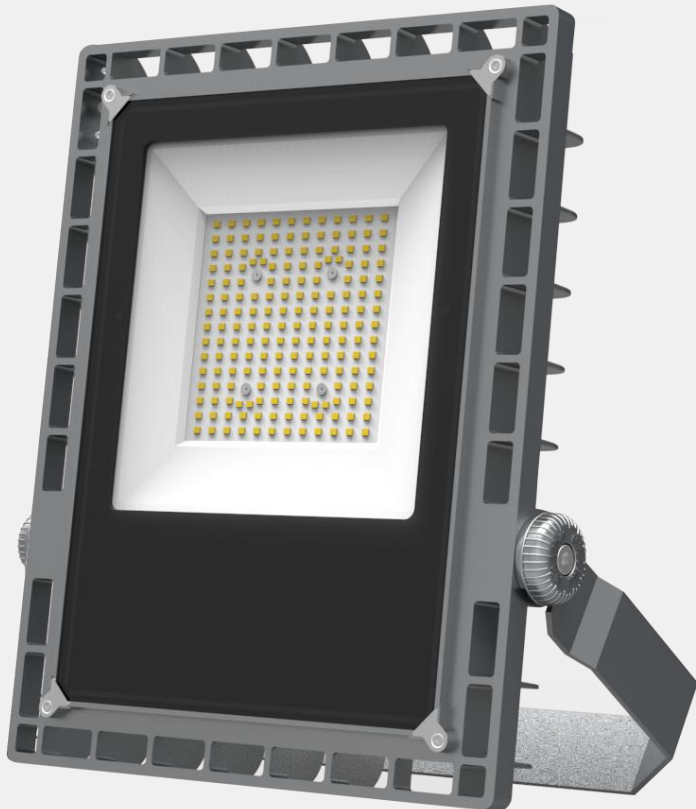
Asymmetric

FY SERIES

High cost-effective



120°



Key Characteristic

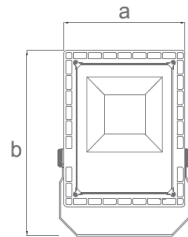
Standard Version

Item	FY1	FY3
Power(W)	100	150
Efficiency(Lm/W)	130*	
Luminous flux(Lm)	13000	19500
CRI(Ra)	70	
Input voltage	AC220-240V 50-60Hz	
CCT(K)	3000,4000, 5700	
PF	0.95	
Surge protection(KV)	6/6	

LED: SMD3030 Edison,
Driver: EDISON non-isolated
LED drive
Body: High-Pressure Die-cast
Aluminum
Protector: Tempered Glass

* Efficiency rated at CCT
4000K

Dimensions



FY1	a245*b364*c56mm
FY3	a280*b415*c58mm



Features



Thermal Design

Robust thermal design,delivering stable product performance



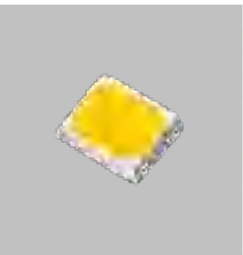
Flexible Tilting

Mounting by means of bracket enables the inclination to be adjusted precisely on-site



Isolated Driver Option

Isolated driver option for flicker-free and wide input voltage



130Lm/W

2835 high efficiency LED

FS SERIES

Numerous optics options and high cost-effective



Key Characteristic

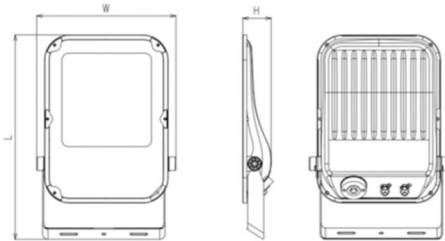
Standard Version

Item	FS1	FS2	FS3	FS4
Power (W)	50	100	150	200
Efficiency (Lm/W)	140 *			
Luminous flux(Lm)	7000	14000	21000	28000
CRI (Ra)	70			
Input voltage	AC 100-240V 50-60Hz			
CCT (K)	3000 , 4000 , 5700			
PF	0.95			
Surge protection(KV)	5/10			

LED: SMD5050 Edison,
Driver: MOSO
Body: High-Pressure Die-cast Aluminum
Protector: Tempered Glass

* Efficiency rated at CCT 4000K

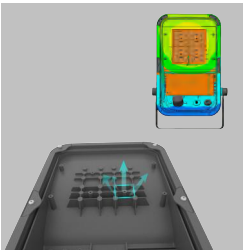
Dimensions



FS1	L348xW247xH71mm
FS2	L398xW249xH69mm
FS3	L456xW308xH73mm
FS4	L530xW360xH73mm

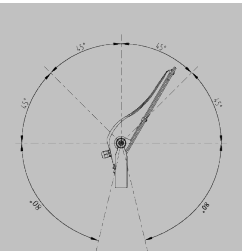


Features



Thermal Design

Superior thermal management design for high reliability.



Flexible Tilting

Mounting by means of bracket enables the inclination to be adjusted precisely on-site



Smart Upgrade

NEMA receptacle and various accessories



Photometric Flexibility

Numerous optics options.

FZ SERIES

Suitable for high mast application



Key Characteristic

Standard Version

Item	FZ1	FZ2
Power(W)	240	480
Efficiency(Lm/W)	140*	
Luminous flux(Lm)	33600	67200
CRI(Ra)	70	
Input voltage	AC100-240V 50-60Hz	
CCT(K)	3000,4000, 5700	
PF	0.95	
Surge protection(KV)	5/10	

LED: SMD3030 Edison,
Driver: MOSO
Body: High-Pressure Die-cast Aluminum

* Efficiency rated at CCT 4000K

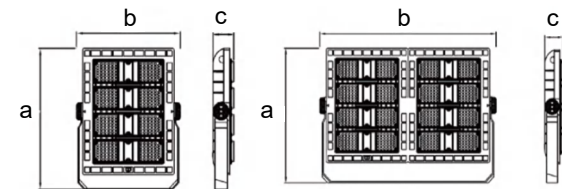
High Efficiency Version

Item	FZ1-H	FZ2-H
Power(W)	200	400
Efficiency(Lm/W)	160*	
Luminous flux(Lm)	32000	64000
CRI(Ra)	70	
Input voltage	AC100-240V 50-60Hz	
CCT(K)	3000,4000, 5700	
PF	0.95	
Surge protection(KV)	5/10	

LED: SMD3030 Edison,
Driver: MOSO
Body: High-Pressure Die-cast Aluminum

* Efficiency rated at CCT 4000K

Dimensions



FZ1	a425*b341*c69mm
FZ2	a449*b643*c69mm



Feature



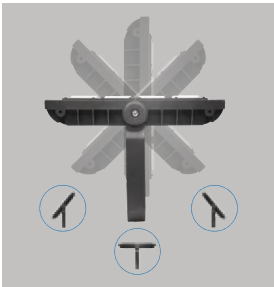
Thermal Design

Cooling fins for optimised thermal management



Numerous Optics

Various optics option for wide range of application



Flexible Tilting

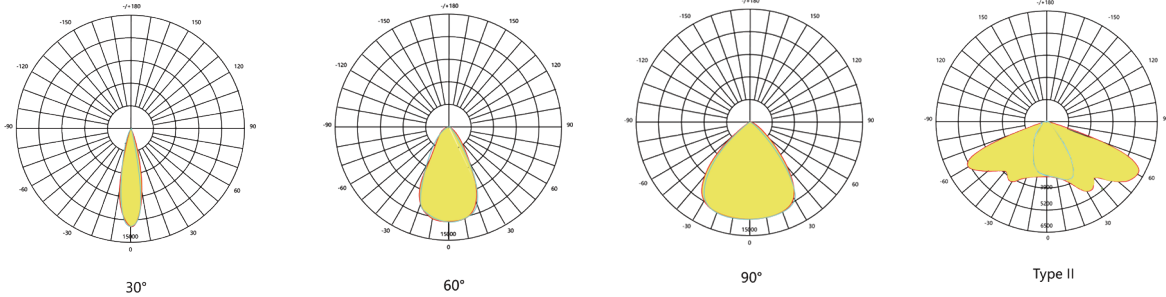
Mounting by means of bracket enables the inclination to be adjusted precisely on-site



High Tightness Level

Superior waterproof design ensure high reliability

Light Distribution



Applications

- Stadium Indoor
- Plazas
- Large Docking Space



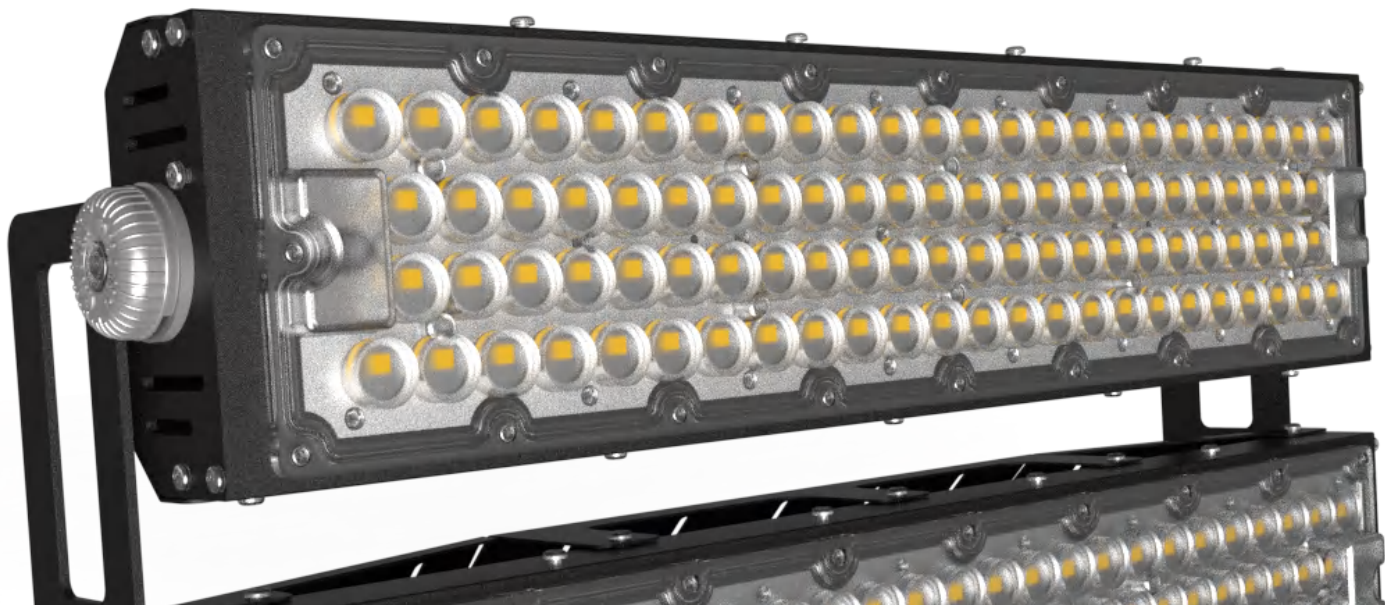
FH SERIES

Suitable for stadium application

FH series projectors are widely applied in such as sports, construction, and area lighting. Its robust mechanical design and long service life make it popular with all customers. It saves a lot of energy by comparing with traditional floodlights.



Multiple Beam Angles



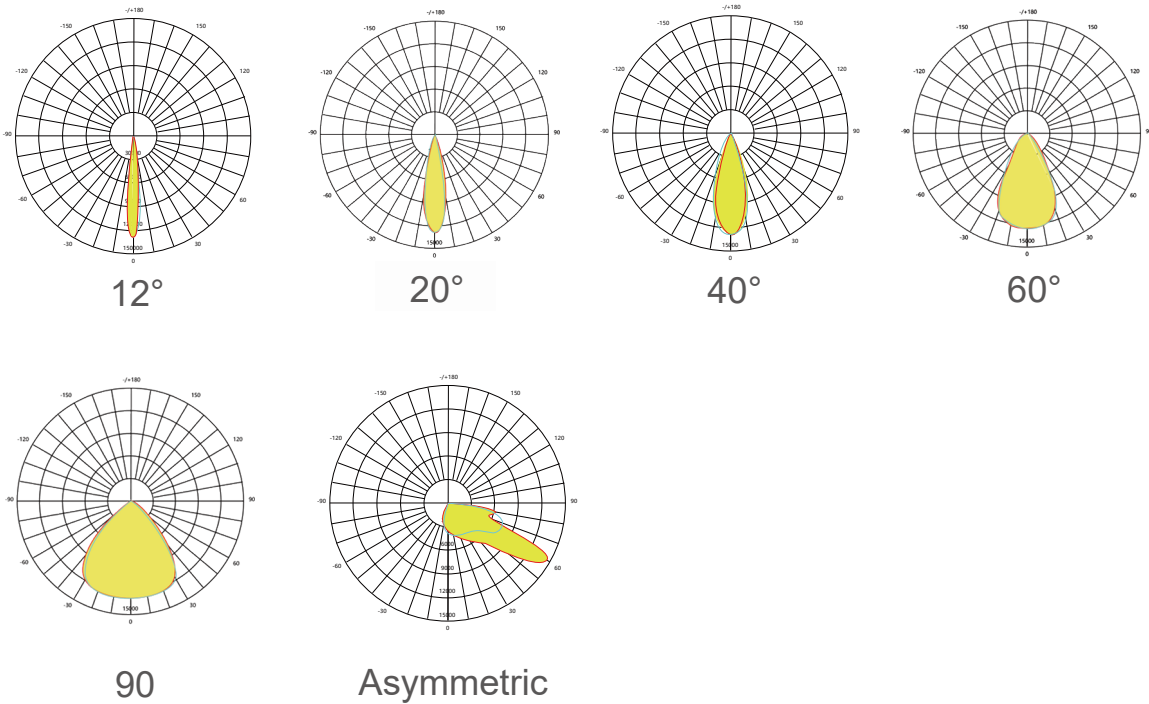
FH LED flood light has multi beam angles,it is suitable for all kinds of applications with different height and spacing.

Modularized

Each modula 250W,from 250W to 1000W are easy expanded,which also allow easy-stock.And it is exceptional in the market.



Light Distribution Optional



Wide Applications

Stadiums
Building facades and monuments
Park



Key Characteristic

Standard Version

Item	FH1	FH2	FH3	FH4
Power(W)	250	500	750	1000
Efficiency(Lm/W)	150*			
Luminous flux(Lm)	37500	75000	112500	150000
CRI(Ra)	70			
Input voltage	AC100-240V 50-60Hz			
CCT(K)	3000,4000, 5700			
PF	0.95			
Surge protection(KV)	5/10			

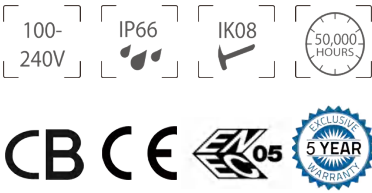
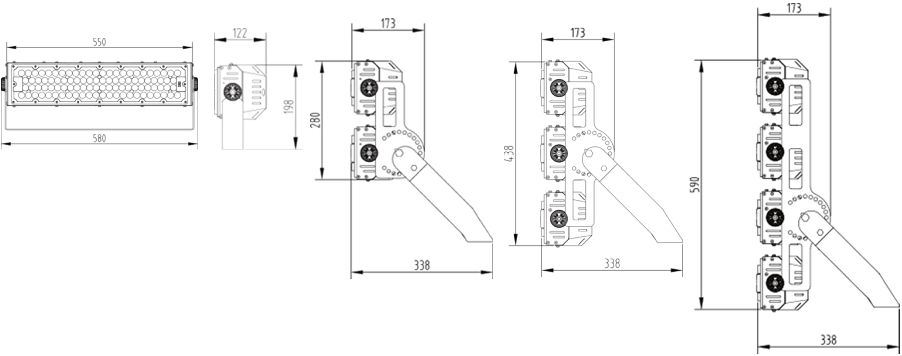
LED: SMD5050 Edison,
Driver: MOSO
Body: High-Pressure Die-cast Aluminum
* Efficiency rated at CCT 4000K

High Efficiency Version

Item	FH1-H	FH2-H	FH3-H	FH4-H
Power(W)	250	500	750	1000
Efficiency(Lm/W)	160*			
Luminous flux(Lm)	40000	80000	120000	160000
CRI(Ra)	70			
Input voltage	AC100-240V 50-60Hz			
CCT(K)	3000,4000, 5700			
PF	0.95			
Surge protection(KV)	5/10			

LED: SMD5050 Edison,
Driver: MOSO
Body: High-Pressure Die-cast Aluminum
* Efficiency rated at CCT 4000K

Dimensions

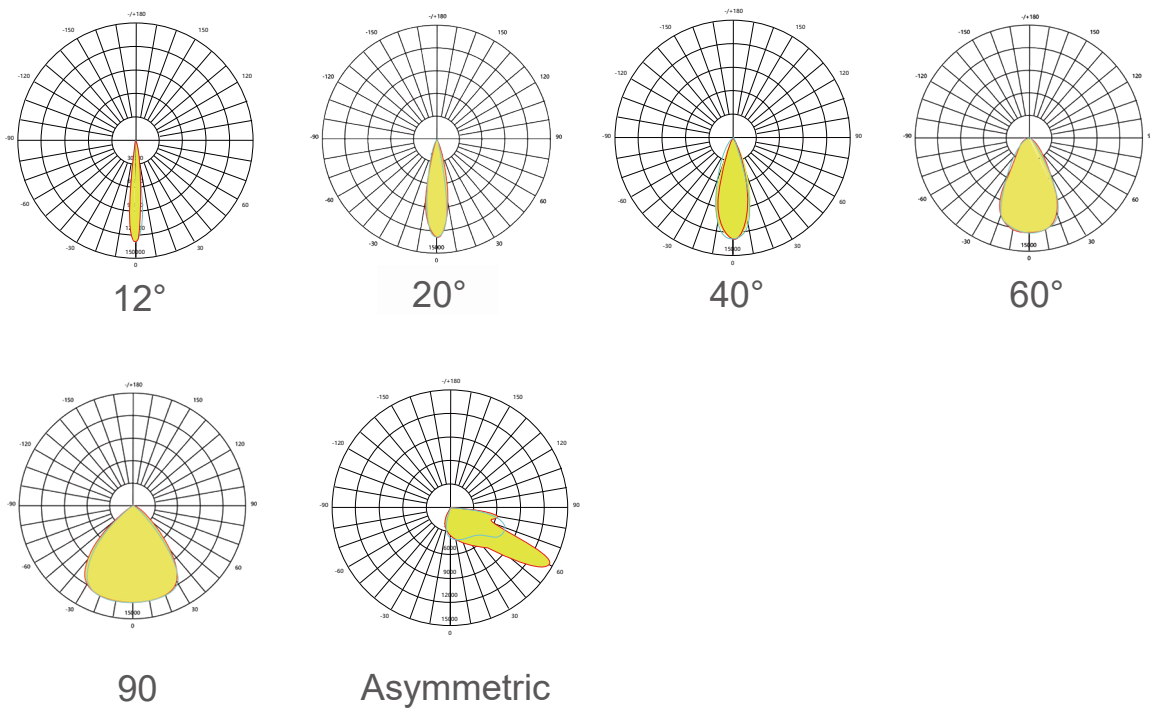


Modularized

Each modula 250W,from 250W to 1000W are easy expanded,which also allow easy-stock.And it is exceptional in the market.



Light Distribution Optional



LED Highbay Light

LED highbay series provide remarkable lighting solution mainly for warehouse, factory, and any large and cavernous space.

HL-Series

P47-54



100W-240W
150lm/W, 180lm/W
4000K, 5700K
90°
IP65, IK08
5 years
CE, CB

HQ-Series

P55-56



100W-200W
150lm/W
4000K, 5700K
60°, 90°, 120°
IP65, IK08
3 years
CE

HB-Series

P57-58



100W-200W
140lm/W, 165lm/W
3000K, 4000K, 5000K, 5700K
60°, 90°
IP65, IK08
5 years
CE, CB

HM-Series

P59-62



40W-240W
140lm/W
4000K, 5700K
30°/60°/90°/30°*70° etc
IP66, IK08
5 years
CE

HL SERIES

High lighting efficiency

180
LM/W

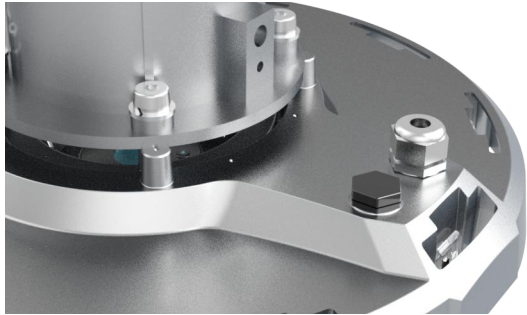


Creates a Healthy Working Environment

HL series is highly efficient and reliable LED high bay light. The high system efficiency is up to 150Lm/W due to the state-of-the-art LED technology. It offers flexible options in optics, powers, control, accessories and mounting. HL series high bay light provides safe, appropriate and secure lighting experience in industrial application and it is the smart choice for any new or retrofit installations.

Vent

There is a vent to balance the atmosphere pressure and to prevent moisture.



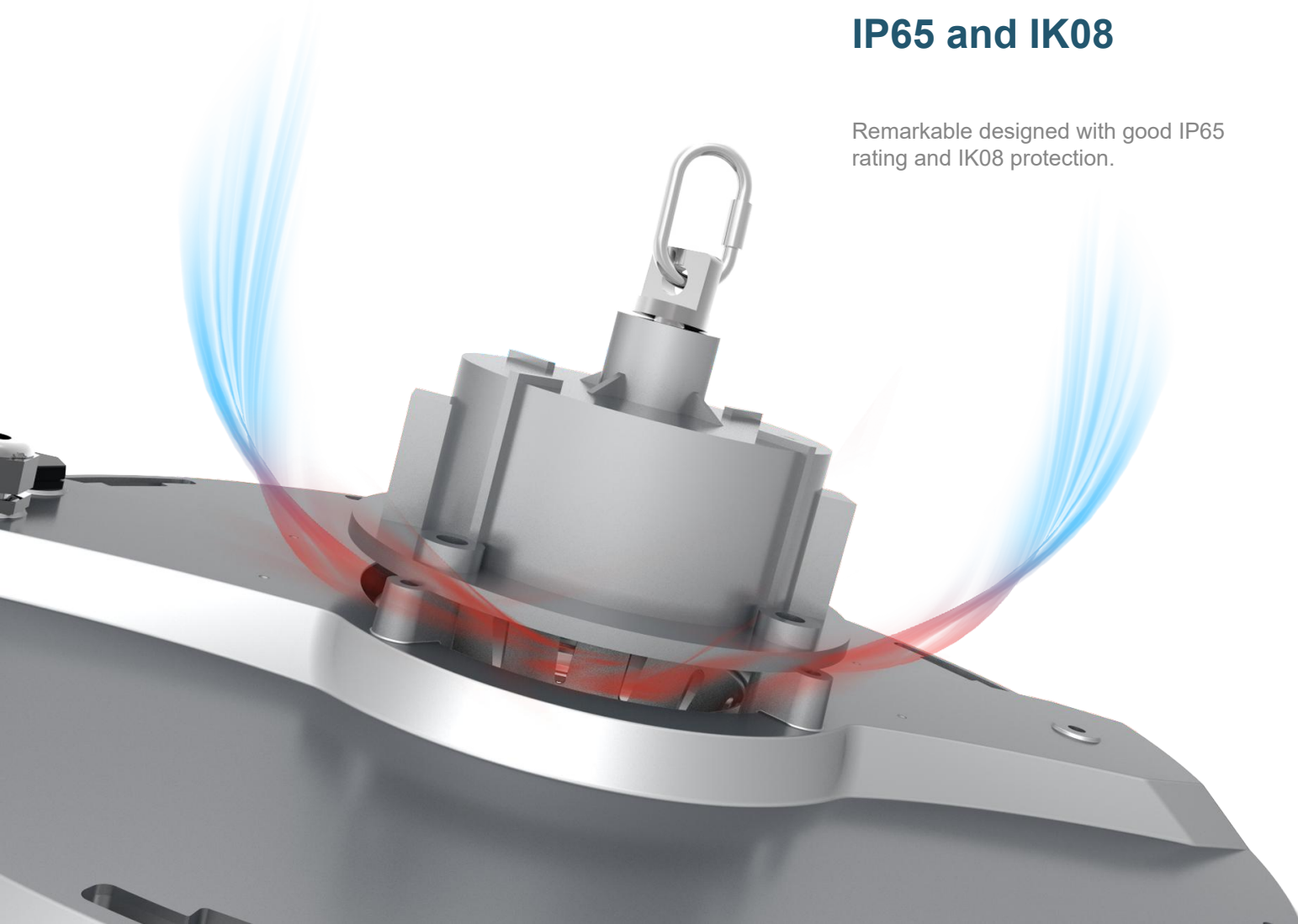
180Lm/W

The efficiency up to 180Lm/W



Efficient heat dissipation design

Air convection design, effective heat dissipation



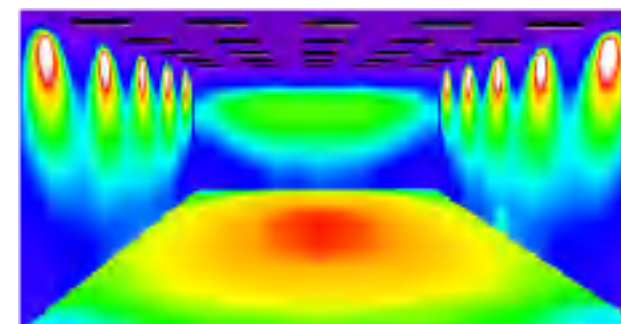
IP65 and IK08

Remarkable designed with good IP65 rating and IK08 protection.

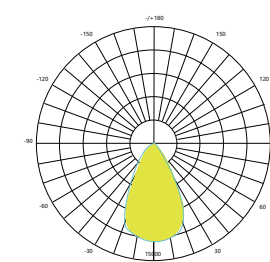


Light Distribution Options

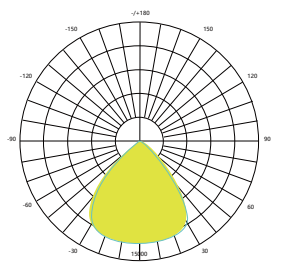
All of our lights have various light distribution options. Further more, our professional optical engineers will provide the best lighting solutions for you project by DIALUX simulation



www.edison-opto.com



60°(Pending)



90°

Key Characteristic

Standard Version

Item	HL2		HL4	
Power(W)	100	150	200	240
Efficiency(Lm/W)	150*			
Luminous flux(Lm)	15000	22500	30000	36000
CRI(Ra)	70			
Input voltage	AC100-240V 50-60Hz			
CCT(K)	4000, 5700			
PF	0.95			
Surge protection(KV)	4/6			

LED: SMD2835 Edison,
Driver: Edison ,Philips,MOSO
no-isolated LED driver
Body: High-Pressure Die-cast
Aluminum

* Efficiency rated at CCT
4000K

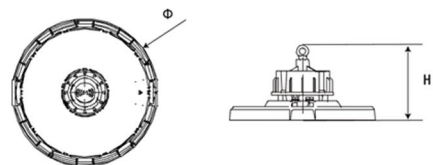
High Efficiency Version

Item	HL2-H		HL4-H	
Power(W)	100	150	200	240
Efficiency(Lm/W)	180*			
Luminous flux(Lm)	18000	27000	36000	43200
CRI(Ra)	70			
Input voltage	AC100-240V 50-60Hz			
CCT(K)	3000, 4000, 5700			
PF	0.95			
Surge protection(KV)	4/6			

LED: SMD2835 Edison,
Driver: Edison ,Philips,MOSO
no-isolated LED driver
Body: High-Pressure Die-cast
Aluminum

* Efficiency rated at CCT
4000K

Dimensions



HL2	Φ307*H138
HL4	Φ380*H14



Accessories



Wiring Connector



Safety Chain



HL2-A Reflector 75°

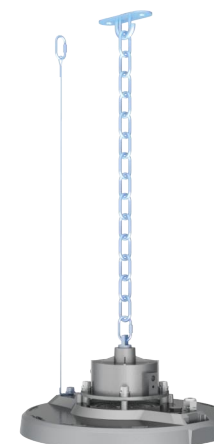


HL2-B Reflector 90°

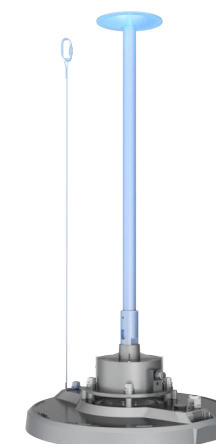


HL4 Reflector 90°

Better Installation, Low Cost, Time Saving



Ceiling rings
(hoisting)



Ceiling hanger
(rod mounted)



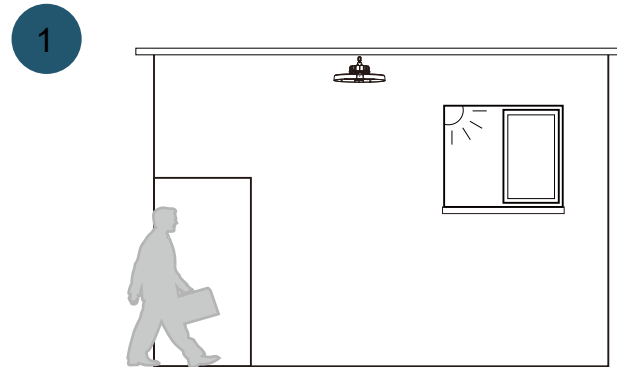
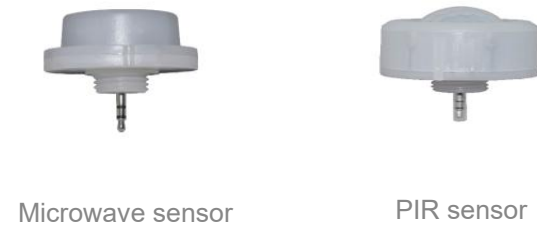
Top mount bracket



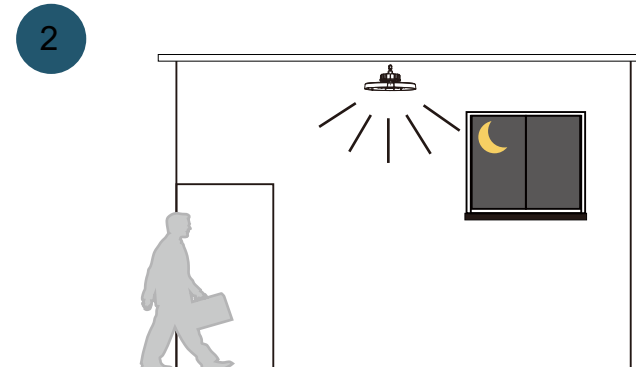
Wall bracket

Smart upgrade

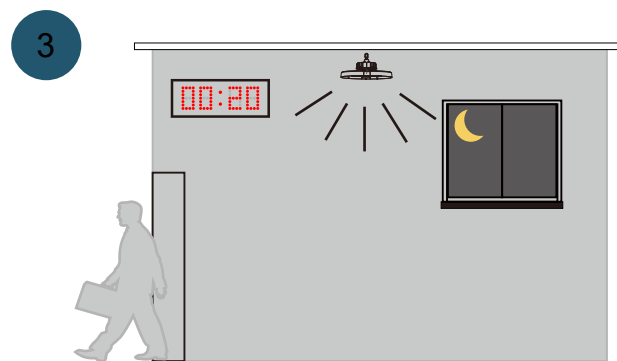
The lamp is centered on the lamp and detects the movement within 8 meters of the radius. When the ambient brightness is insufficient, the lamp will automatically turn on when someone comes. After the delay time, the lamp will enter the micro light mode and turn off after the micro light technology



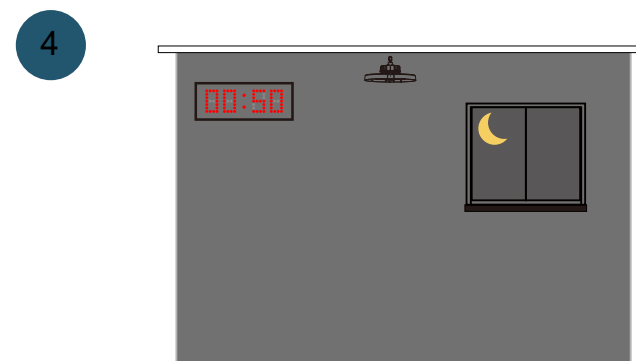
The light will not turn on when the ambient light is sufficient



If there is no sufficient ambient light, the light will turn on when you approaching.



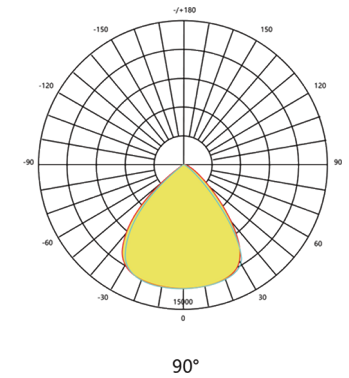
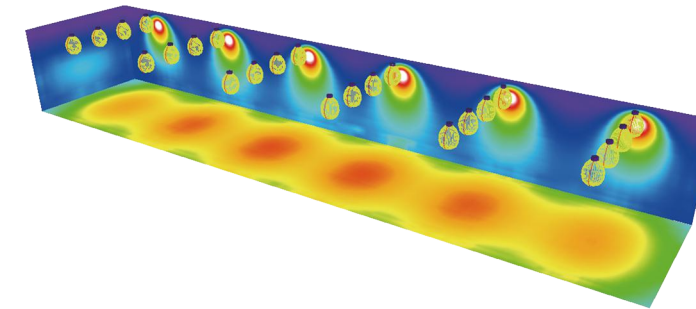
The light is at waiting status when you left. When the light is at the waiting brightness, there are movement, return to full brightness, or re-timing procedures.



The light will automatically turn off after the waiting status.

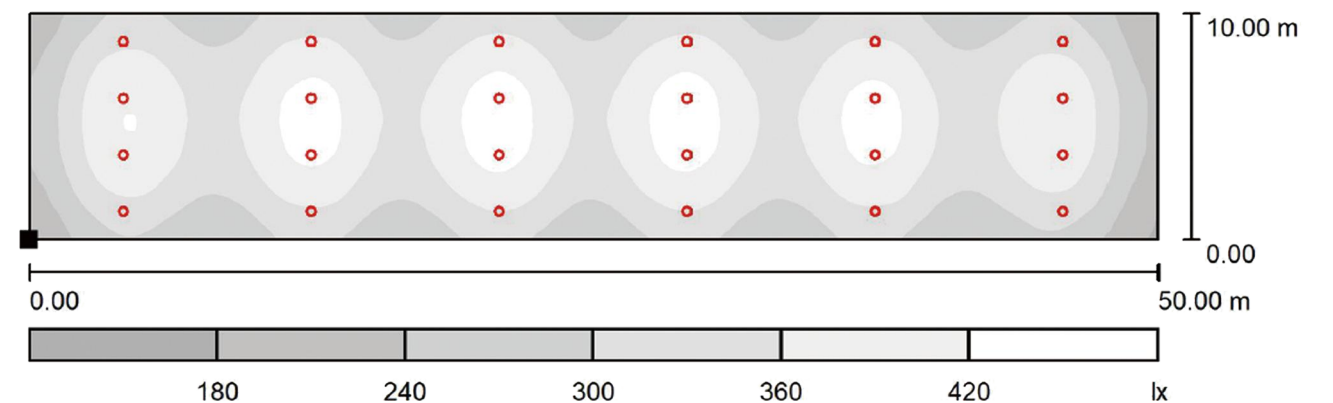
Lighting Engineering Design Solution

Height of working plane : 0.85m , Light loss factor : 0.8m , Height of Room : 7.0m Ground area : 500m²



Lamp selection: Luminous flux (Luminaire):14980 lm,
Luminaire Wattage: 98.6w

24PCS,HL2-100W,Eav[lx]=448luX





HQ SERIES

Cost effective,Non-isolated LED driver

HQ is a cost-effective Highbay light. It has an excellent heat dissipation design, with the highest luminous efficiency of 150Lm/W. It uses non-isolated driver, and it has IP65, IK08 protection design, which increases its reliability.

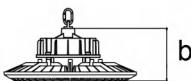
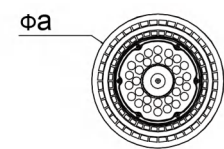
Key Characteristic

Standard Version

Item	HQ1	HQ2	HQ3
Power (W)	100	150	200
Efficiency (Lm/W)	150		
Luminous flux(Lm)	15000	22500	30000
CRI (Ra)	70		
Input voltage	AC 220-240V 50-60Hz		
CCT (K)	4000, 5700		
PF	0.95		
Surge protection (KV)	2/2		

LED: SMD2835 Edison,
Driver: Edison no-isolated LED driver
Body: High-Pressure Die-cast Aluminum
* Efficiency rated at CCT 4000K

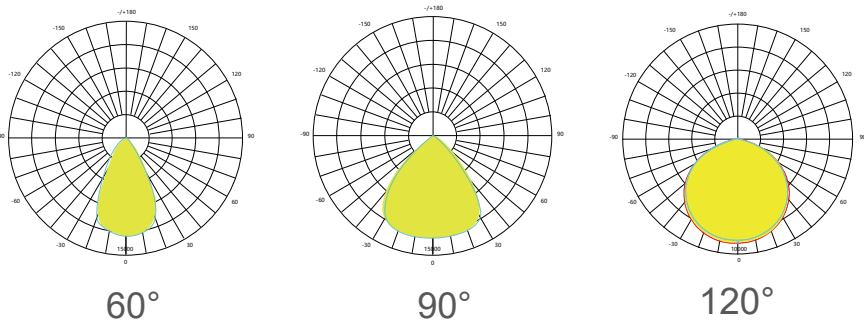
Dimensions



HQ1	a295*b92.5mm
HQ2	a350*b99mm
HQ3	a400*b102mm



Light Distribution Options





HB SERIES

Available for high ta temperature application

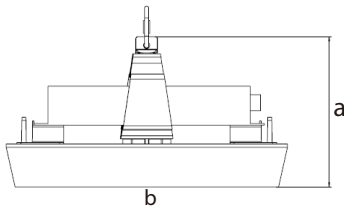
Key Characteristic

Item	HB1		HB2		HB3	
Power(W)	100		150		200	
Efficiency (Lm/W)	140/165					
Luminous flux(Lm)	14000	16500	21000	24750	28000	33000
CRI (Ra)	70					
Input voltage	AC 100-240V 50-60Hz					
CCT (K)	3000, 4000, 5700					
PF	0.95					
Surge protection (KV)	5/10					

LED: SMD2835/3030 Edison,
Driver: MOSO isolated LED driver
Body: High-Pressure Die-cast Aluminum

* Efficiency rated at CCT 4000K

Dimensions



HB1	a140*b270mm
HB2	a140*b300mm
HB3	a145*b400mm



Features



Versatile Mounting

The fixture offers different mounting options by hook, steel tube and braket



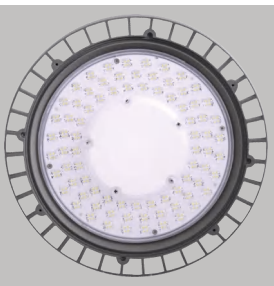
Photometric Option

It is available for 60 and 90 degrees on-site replaceable lens



Thermal Design

Optimised thermal management design assures long lifetime



High Saving

Highest efficiency up to 165Lm/W

HM SERIES

SPECIFICALLY FOR AISLE IN WAREHOUSE



HM HIGBAY LIGHT IS DESIGNED
FOR AISLE IN WAREHOUSE

140
LM/W



Key Characteristic

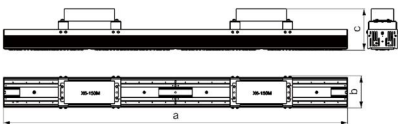
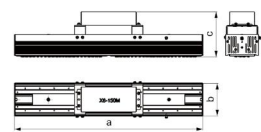
Standard Version

Item	SM2	SM3	SM4	SM5	SM6
Power(W)	80	120	160	200	240
Efficiency(Lm/W)	170*				
Luminous flux(Lm)	13600	20400	27200	34000	40800
CRI(Ra)	70				
Input voltage	AC 100 -240 V 50 -60 Hz				
CCT(K)	4000 , 5700				
PF	0.95				
Surge protection(KV)	5/10				

LED: SMD 5050 Edison,
Driver: PHILIPS,MOSO
Body: High-Pressure Die-cast Aluminum

* Efficiency rated at CCT 4000K

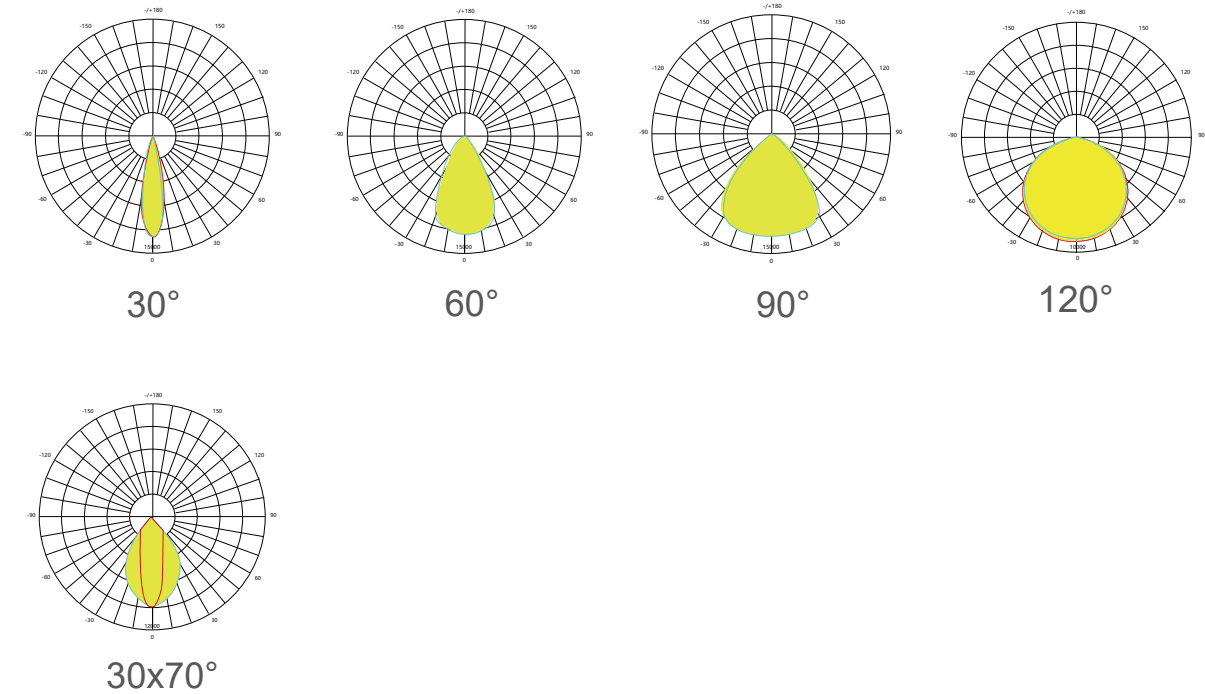
Dimensions



HM1	a259*b96*c125mm
HM2	a519*b96*c125mm
HM3	a779*b96*c127mm
HM4	a1039*b96*c125mm



Light Distribution



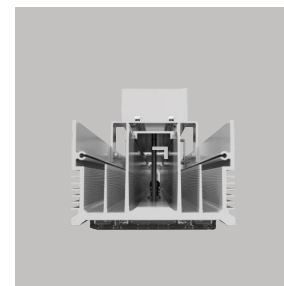
Versatile Mounting

The fixture offers different mounting options by bracket or suspension ring



Photometric Option

Numerous optics options



Thermal Design

Optimised thermal management design assures long lifetime



High Tightness Level

Superior waterproof design ensure high reliability

